

# Central Missouri's Lake of the Ozarks Demographic Profile 2019



***"Best Recreational Lake"***

IN THE NATION AS CHOSEN BY

Readers of **USA TODAY & 10Best**



## Lake of the Ozarks Facts & Figures

**Water Covers 54,000 Acres**

**95 Miles Long** (Truman Dam to Bagnell Dam)

**1,150 Miles of Shoreline**

Including the Counties and Communities of:  
Camden County, Miller County, Morgan County

Camdenton, Eldon, Lake Ozark, Osage Beach,  
and Versailles



**Lake of the Ozarks**  
Regional Economic Development Council  
Quality Life. Quality Business.

January 2019





Photo By: Lake of the Ozarks CVB

# Table of Contents

(Click on Section to Go Directly to Related Data)

Missouri Facts and Figures .....	4
Population Data.....	9
Education Data.....	14
Income Data .....	23
Employment Data.....	27
Taxation Data .....	37
Transportation and Logistics Data .....	43
Utilities and Telecommunications Data .....	53
Lake Area Information .....	61



**Lake of the Ozarks**  
Regional Economic Development Council  
Quality Life. Quality Business.



## Facts

State Population 6,075,300 (2017)

18th Largest State in Population

114 Counties + City of St. Louis

## Figures

Land Area (sq. mi.)

Total 69,707

Land 68,742

Water 965

Median Family Income (2017)

\$64,776

Per Capita Personal Income (2018)

\$46,703

Unemployment Rate (October 2018) 3.1%

Cost of Living (2018) 4th Lowest in the Nation

Sales Tax Rate (2018) 4.225%

Gasoline Tax Rate (2018) State \$0.17, Federal \$0.184 gallon

Gross State Product (2017) \$263 Billion (22th largest State GDP)

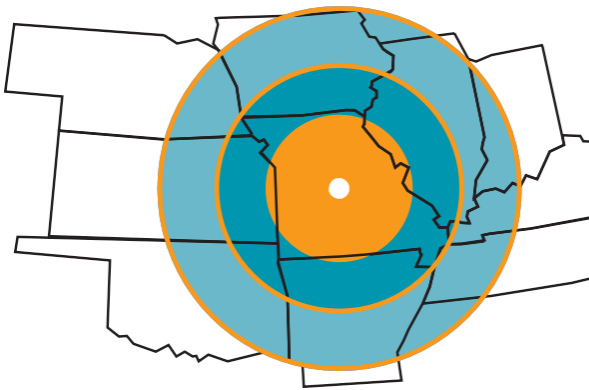


Sources: United States Census Bureau 2017 ACS, Federal Reserve Economic Data, Missouri Department of Labor, MERIC



# The Lake of the Ozarks Region

Lake of the Ozarks has experienced tremendous growth and development over the last 20 years and now boasts a population of more than 89,000 permanent residents and a thriving tourism industry. The popularity of the Lake of the Ozarks region is accentuated by its central location in Missouri; it is a similar distance from the state's largest population centers, St. Louis and Kansas City. Because of the unique ability to build at the water's edge and the availability of diverse activities, the Lake Area is projected to experience continued growth and development.



St. Louis	165 Miles	Kansas City	198 Miles
Springfield	100 Miles	Branson	133 Miles
Chicago	463 Miles	Omaha	386 Miles
Tulsa	278 Miles	Wichita	286 Miles
OK City	481 Miles	Little Rock	307 Miles
Des Moines	325 Miles	Memphis	298 Miles

Within a 165-mile radius, Lake of the Ozarks is a short driving distance to nearly all of Missouri, in addition to portions of Arkansas, Kansas, Illinois and Iowa.

## State Parks

The beauty of our region can be experienced at our State Parks. Lake of the Ozarks offers visitors the opportunity to visit the great outdoors with two state parks within our region:

**Ha Ha Tonka State Park**  
**1491 State Road D**  
**Camdenton, MO 65020**

**Lake of the Ozarks State Park**  
**403 Hwy 134**  
**Kaiser, MO 65047**

**Pa He Tsi Park (part of LOTO State Park)**  
**Nichols Road**  
**Osage Beach, MO 65065**

Ha Ha Tonka State Park was voted #4 State Park in America by readers of USA TODAY and 10Best



**MISSOURI**  
 DEPARTMENT OF  
 NATURAL RESOURCES



enjoy the show

FY 2017 Missouri State Tax Revenue reflects that every **\$1.00** spent on Tourism brought **\$3.44** back to Missouri

FY 2017 Economic impact of tourism **\$16.8 Billion** (+\$0.3B from 2016)

FY 2017 Total spending in tourism-related SIC codes **\$13.3 Billion** (+\$0.2B)

FY 2017 Missouri hosted more than **42.0 Million Visitors** (+0.3M)

FY 2016 **26%** of visitors come in Spring, **24%** Summer, **27%** in Fall and **23%** in Winter

FY 2017 Out-of-State Visitors **59%** In-State Visitors **41%**

FY 2017 The number of Missourians employed in tourism industry: **313,362**

FY 2017 Shopping is the most common activity for Missouri visitors, followed by local dining, city sightseeing, and family attractions.

Source: Missouri Division of Tourism



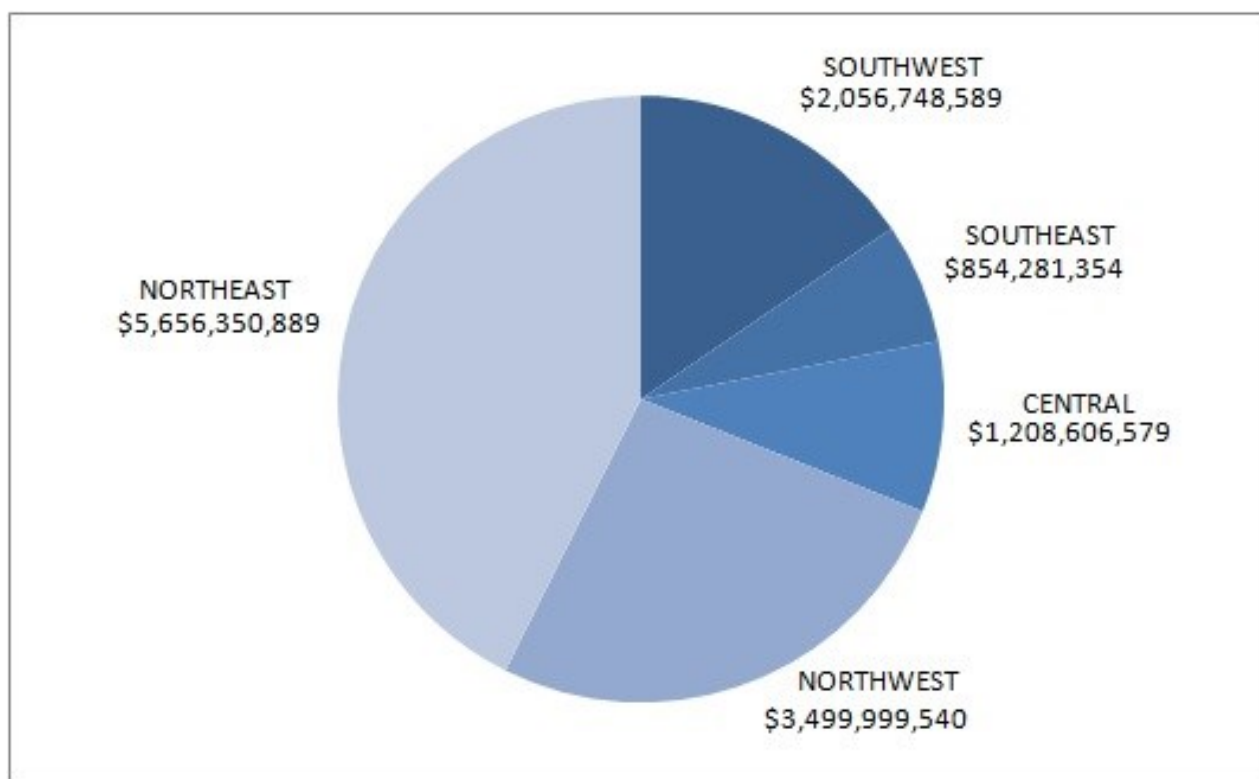
Lake of the Ozarks Convention & Visitor Bureau  
P.O. Box 1498 Osage Beach, MO 65065



## Total Tourism Spending by Region, FY 2017

Of the \$13.3 Billion total tourism spending:

- Northeast region accounts for **\$5.7 billion** or **43%** of Missouri's tourism economy
- Northwest: **\$3.5 billion** or **26%**
- Central **\$1.2 billion** or **9%**
- Southeast **\$0.9 billion** or **6%**
- Southwest **\$2.0 billion** or **15%**



Source: Missouri Division of Tourism

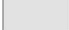
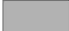

## 2017 Tourism Expenditures



### Legend

#### LOREDCregion

#### Expense Amount

	23,278,031
	36,545,395
	164,592,226

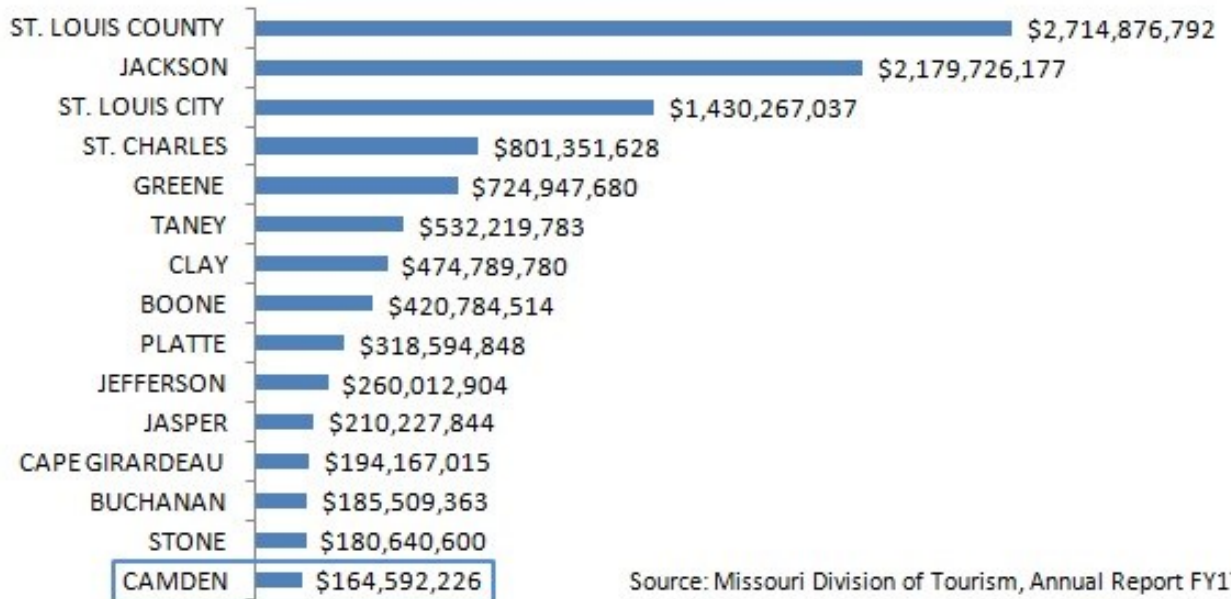


**Lake of the Ozarks**  
Regional Economic Development Council  
Quality Life. Quality Business.

Source: Missouri Division of Tourism



## TOP 15 TOTAL EXPENDITURES IN 17 TOURISM-RELATED SIC CODES BY COUNTY, FY17



Source: Missouri Division of Tourism, Annual Report FY17

## TOURISM-RELATED EMPLOYMENT, FY17



Source: Missouri Division of Tourism, Annual Report FY17

## Population Data

- County Population/Projections
  - City Populations & Estimates
    - County Population by Age
- County Populations by Race & Ethnicity
  - County Housing
- County Populations by Employment Status
  - Population Density Map

[Return to Table of Contents](#)



**Lake of the Ozarks**  
Regional Economic Development Council  
*Quality Life. Quality Business.*



## County Population/Projections

	2000	2010	2020 (est)	2030 (est)	% Change '10-'30
<b>Camden</b>	37,051	41,660	46,290	49,124	15%
<b>Miller</b>	23,564	25,550	27,277	28,404	10%
<b>Morgan</b>	19,309	21,386	23,357	24,827	14%

Source: <http://oa.mo.gov/bp/projections/TotalPop.pdf>

## City Populations &amp; Estimates

	2010	2017	Change	
			#	%
<b>Camden County</b>	44,002	44,855	853	1.9%
<b>Camdenton</b>	3,718	3,934	216	5.8%
<b>Linn Creek</b>	244	251	7	2.9%
<b>Osage Beach</b>	4,351	4,857	506	11.6%
<b>Stoutland</b>	152	214	62	40.8%
<b>Sunrise Beach</b>	357	330	-27	7.6%
<b>Village of Four Seasons</b>	2,217	2,245	28	1.3%

Source: United State Census Bureau 2010 Census, 2017 ACS 5-Year Estimates



Photo By: Lake of the Ozarks CVB

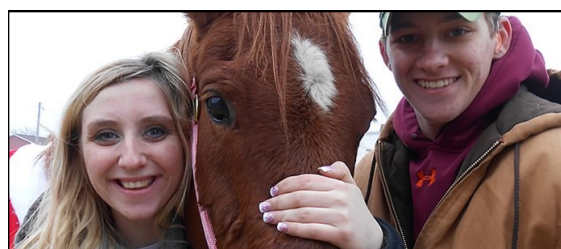


Photo By: Camdenton Area Chamber of Commerce

## City Populations &amp; Estimates

	2010	2017	Change	
			#	%
<b>Miller County</b>	24,748	24,947	199	0.8%
<b>Bagnell</b>	93	38	-55	-59.1%
<b>Brumley</b>	91	70	-21	-23.0%
<b>Eldon</b>	4,567	4,580	13	0.2%
<b>Iberia</b>	736	687	-49	-6.7%
<b>Lake Ozark</b>	1,459	1,915	456	31.3%
<b>Olean</b>	128	85	-43	-33.6%
<b>St. Elizabeth</b>	336	329	-7	-2.1%
<b>Tuscumbia</b>	203	202	-1	-0.5%

## City Population & Estimates

	2010	2017	Change	
			#	%
<b>Morgan County</b>	20,565	20,097	-468	-2.3%
<b>Barnett</b>	203	246	43	21.2%
<b>Gravois Mills</b>	144	128	-16	-11.1%
<b>Laurie</b>	945	961	16	1.7%
<b>Stover</b>	1,094	1,239	145	13.3%
<b>Syracuse</b>	172	162	-10	-5.8%
<b>Versailles</b>	2,482	2,867	385	15.5%

Source: United States Census Bureau 2010 Census, 2017 ACS 5-Year Estimates



Photo By: Camdenton Area Chamber of Commerce

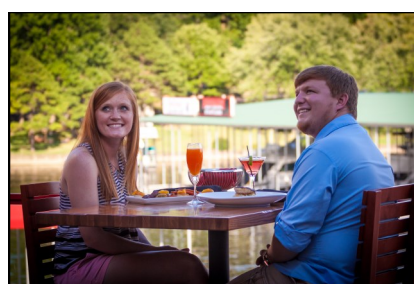


Photo By: Lake of the Ozarks CVB

## County Population by Age

Year 2010	Camden		Miller		Morgan	
<b>&lt;20</b>	9264	21.1%	6,719	27.2%	5,034	24.5%
<b>20 - 44</b>	10,510	23.9%	7,182	29.0%	4,938	24.0%
<b>45 - 64</b>	14,694	33.4%	6,950	28.0%	6,058	29.5%
<b>65 - 84</b>	8,813	20.0%	3,363	13.6%	4,043	19.7%
<b>85&lt;</b>	721	1.6%	534	2.2%	492	2.3%

Year 2017	Camden		Miller		Morgan	
<b>&lt;20</b>	9,188	20.5%	6,483	26.0%	4,789	23.8%
<b>20 - 44</b>	10,080	22.5%	7,044	28.2%	4,833	24.0%
<b>45 - 64</b>	13,731	30.6%	7,005	28.1%	5,803	28.9%
<b>65 - 84</b>	10,770	24.0%	3,845	15.4%	4,120	20.5%
<b>85&lt;</b>	1,086	2.4%	570	2.3%	552	2.8%

Source: United States Census Bureau, 2010 and 2017 Demographic Estimates



## County Populations by Race & Ethnicity

	Camden		Miller		Morgan	
	2010	2017	2010	2017	2010	2017
<b>White</b>	42,468	43,154	23,941	24,041	19,770	19,324
<b>Black/African American</b>	179	355	99	95	131	168
<b>American Indian/ Alaska Native</b>	219	256	136	305	135	105
<b>Asian</b>	184	279	70	119	76	23
<b>Native Hawaiian/ Pacific Islander</b>	8	0	36	0	2	0
<b>Some Other Race</b>	362	406	96	127	87	75
<b>Two or More Races</b>	582	405	370	260	364	402
<b>Hispanic/Latino</b>	1,014	1,212	343	451	365	429

Source: United States Census Bureau, 2017 ACS 5-Year Estimates

## County Housing

	Camden		Miller		Morgan	
	2010	2017	2010	2017	2010	2017
<b>Total Housing Units</b>	39,997	41,590	12,649	12,886	15,342	15,566
<b>Occupied Housing Units</b>	18,349	16,340	10,410	9,514	8,414	7,774
<b>Owner-Occupied Units</b>	14,914	13,034	7,835	7,116	6,874	5,859
<b>Renter-Occupied Units</b>	3,435	3,306	2,575	2,398	1,540	1,915
<b>Ave. Household Size</b>	2.27	2.87	2.47	2.52	2.40	2.53
<b>Ave. Family Size</b>	2.68		2.97		2.91	

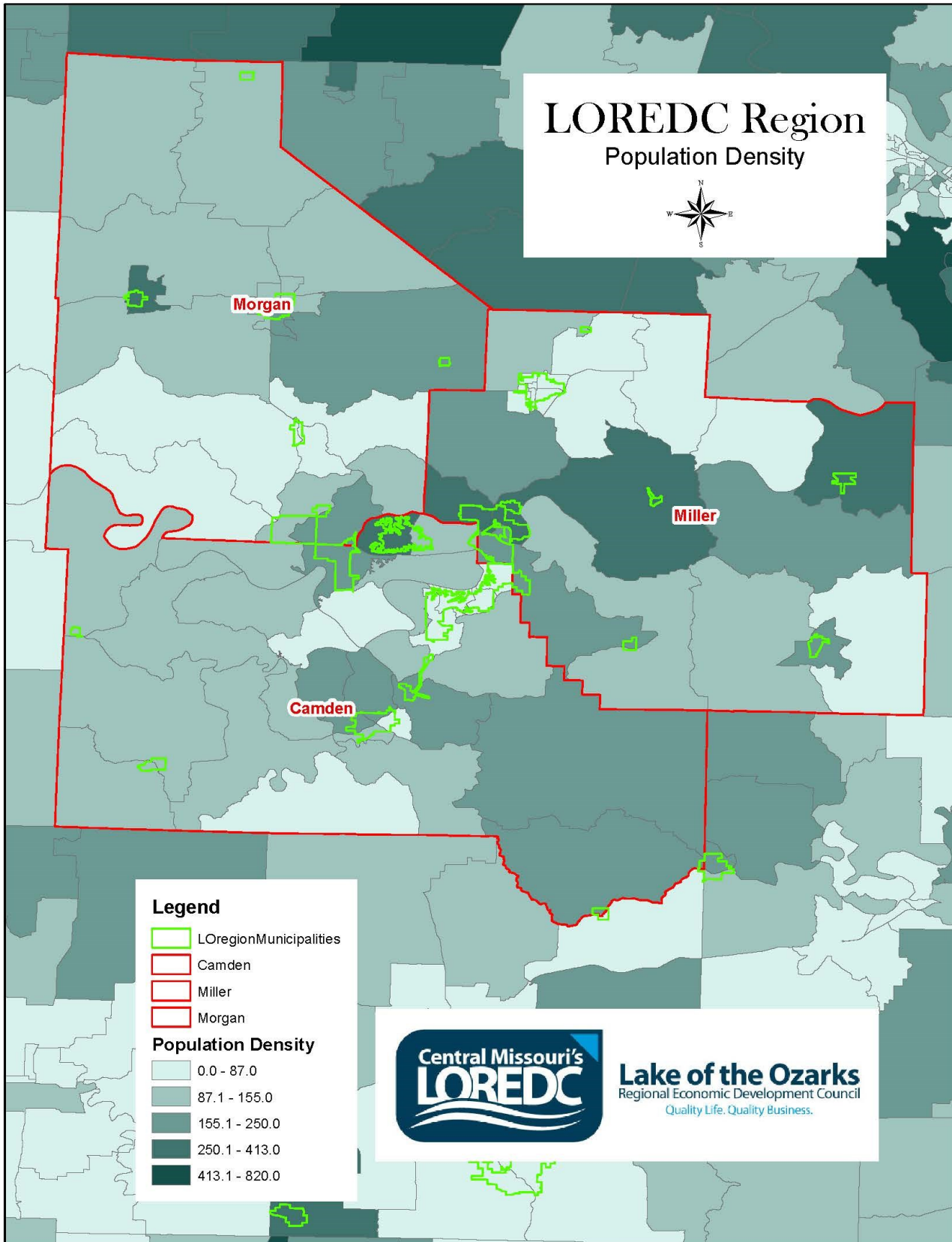
Source: United States Census Bureau, 2017 ACS 5-Year Estimates



Photo By: Lake of the Ozarks CVB



Photo By: Camdenton Area Chamber of Commerce



U.S. Census Bureau, 2016 ACS 5-Year Estimates



Photo By: Lake of the Ozarks CVB

## Education Data

- County Educational Attainment
- County Public, Private, College, University Schools
  - County Education Statistics
- Public and Private School Locations

[Return to Table of Contents](#)



**Lake of the Ozarks**  
Regional Economic Development Council  
*Quality Life. Quality Business.*



# County Educational Attainment, 2017

	Camden	Miller	Morgan
<b>Population 18-24 years</b>	2,986	1,958	1,314
<b>&lt; than High School Graduate</b>	14.4%	19.5%	33.0%
<b>High School Graduate (includes equivalency)</b>	44.5%	38.1%	44.0%
<b>Some College/Assoc. Degree</b>	38.6%	38.8%	20.4%
<b>Bachelor's Degree &lt;</b>	2.5%	3.6%	2.7%
<b>Population 25 years &gt;</b>	33,660	17,040	14,376
<b>Less than 9th Grade</b>	3.2%	4.9%	9.5%
<b>9-12 Grade (no diploma)</b>	8.0%	8.7%	13.2%
<b>High School Graduate (includes equivalency)</b>	36.4%	43.3%	39.4%
<b>Some College (no degree)</b>	22.2%	20.6%	19.3%
<b>Associate's Degree</b>	8.2%	6.5%	6.2%
<b>Bachelor's Degree</b>	14.5%	10.3%	8.2%
<b>Graduate/Professional Degree</b>	7.5%	5.7%	4.4%

Source: 2017 ACS 5-Year Estimates





Photo: Camden County High School

## County Public, Private, College, University Schools 2018

Camden County Schools	Number of Students	Public	Private	College/ University	Other/ Alternative
Camdenton R-III High	1297	X			
Camdenton R-III Middle	664	X			
Camdenton R-III Dogwood Elementary	751	X			
Camdenton R-III Oak Ridge Intermediate	609	X			
Camdenton R-III Hurricane Deck Elementary	198	X			
Camdenton R-III Hawthorn Elementary	499	X			
Camdenton R-III Osage Beach Elementary	282	X			
Climax Springs R-IV High	113	X			
Climax Springs R-IV Elementary	119	X			
Macks Creek R-V High	134	X			
Macks Creek R-V Elementary	211	X			
Stoutland R-II High	217	X			
Stoutland R-II Elementary	238	X			
Lake West Christian	63		X		
Life Christian University	N/A		X		
State Fair Community College	400			X	
Columbia College	519			X	

Source: PublicSchoolReview, PrivateSchoolReview

## County Public, Private, College, University Schools 2018

Miller County Schools	Number of Students	Public	Private	College/ University	Other/ Alternative
Eldon R-I High	605	X			
Eldon R-I Middle	264	X			
Eldon R-I Upper Elementary	427	X			
Eldon R-I Elementary	623	X			
Miller R-II High	264	X			
Miller R-II Central Elementary	322	X			
Miller R-III Tuscumbia High	64	X			
Miller R-III Elementary	145	X			
St. Elizabeth R-IV High	110	X			
St. Elizabeth R-IV Elementary	160				
School of the Osage High	551	X			
School of the Osage Middle	437	X			
School of the Osage Upper Elementary	436	X			
School of the Osage Heritage Elementary	523	X			
Iberia R-V High	322	X			
Iberia R-V Elementary	411	X			
Lakeview Christian	16		X		
Our Lady of the Snows	79		X		

Source: PublicSchoolReview, PrivateSchoolReview



Photo: School of the Osage Heritage Elementary

County Public, Private, College, University Schools 2018					
Morgan County Schools	Number of Students	Public	Private	College/ University	Other/ Alternative
Morgan Co R-I High	286	X			
Morgan Co R-I Elementary	373	X			
Morgan Co R-II High	384	X			
Morgan Co R-II Middle	309	X			
Morgan Co R-II Elementary	639	X			
Morgan Co R-II South Elementary	49	X			
Dogwood Grove	27		X		
St. Paul Lutheran	51		X		

Source: MO DESE, School Report Card, 2018, Great Schools



Photo : Morgan County R-II High School





## County Education Statistics 2018

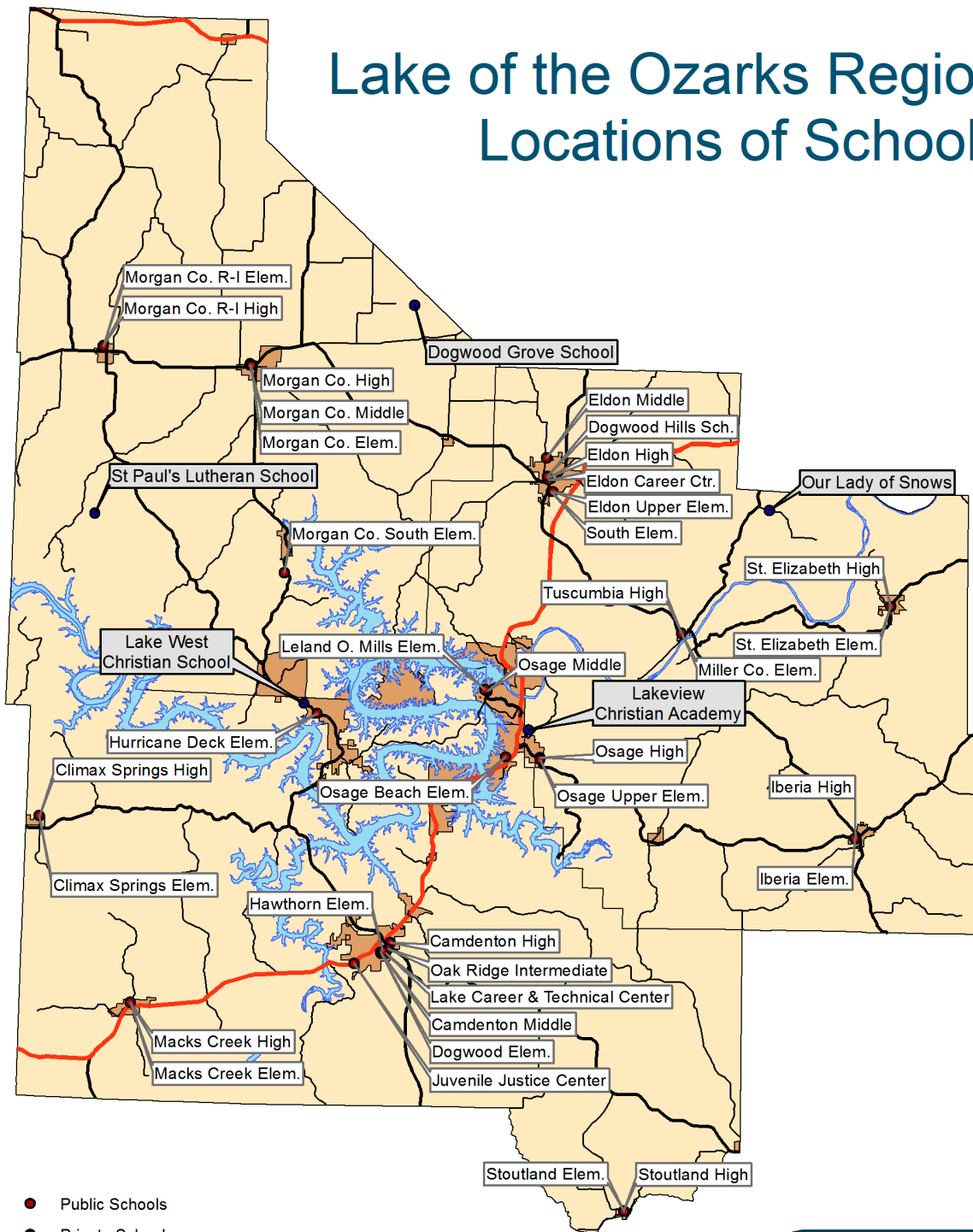
	Graduation Rate	Dropout Rate	Students/ Classroom Teacher	# of Students	# of Teachers and certified Staff
<b>Camden County Districts</b>					
Camdenton R-III	94%		14	4,304	328
Climax Springs R-IV	80%	-	9	232	25
Macks Creek R-V	80%	-	10	345	35
Stoutland R-II	90%	-	12	455	39
<b>Miller County Districts</b>					
Eldon R-I	95%	-	15	1,919	141
Miller Co R-II	90%	-	15	586	39
Miller Co. R-III	60-79%	-	10	209	22
St. Elizabeth R-IV	80%	-	13	270	21
School of the Osage R-II	95%	-	14	1,947	141
Iberia R-V	90%	3.0%	13	733	56
<b>Morgan County Districts</b>					
Morgan Co. R-I	80%	-	13	659	51
Morgan Co. R-II	95%	-	13	1,381	105

Source: Mo DESD, District Report Card, 2018, LocalSchoolDirectory



Photo: Tuscumbia High School

# Lake of the Ozarks Region Locations of Schools



- Public Schools
- Private Schools
- State Numbered Highway
- State Lettered Highway
- US Highway

Map by: Andy Thomason  
Lake of the Ozarks Council of  
Local Governments  
Source: MSDIS  
Date: 1/8/2015



**Lake of the Ozarks**  
Regional Economic Development Council  
Quality Life. Quality Business.



Photo By: Lake of the Ozarks CVB

## Income Data

- County Populations by Household Income
- Map of Statewide Household Income, Census Tracts
- Map of Regional Household Income, Block Groups

[Return to Table of Contents](#)



**Lake of the Ozarks**  
Regional Economic Development Council  
*Quality Life. Quality Business.*





Photo By: Lake of the Ozarks CVB

## County Populations by Household Income (2000, 2017 ACS 5 yr.)

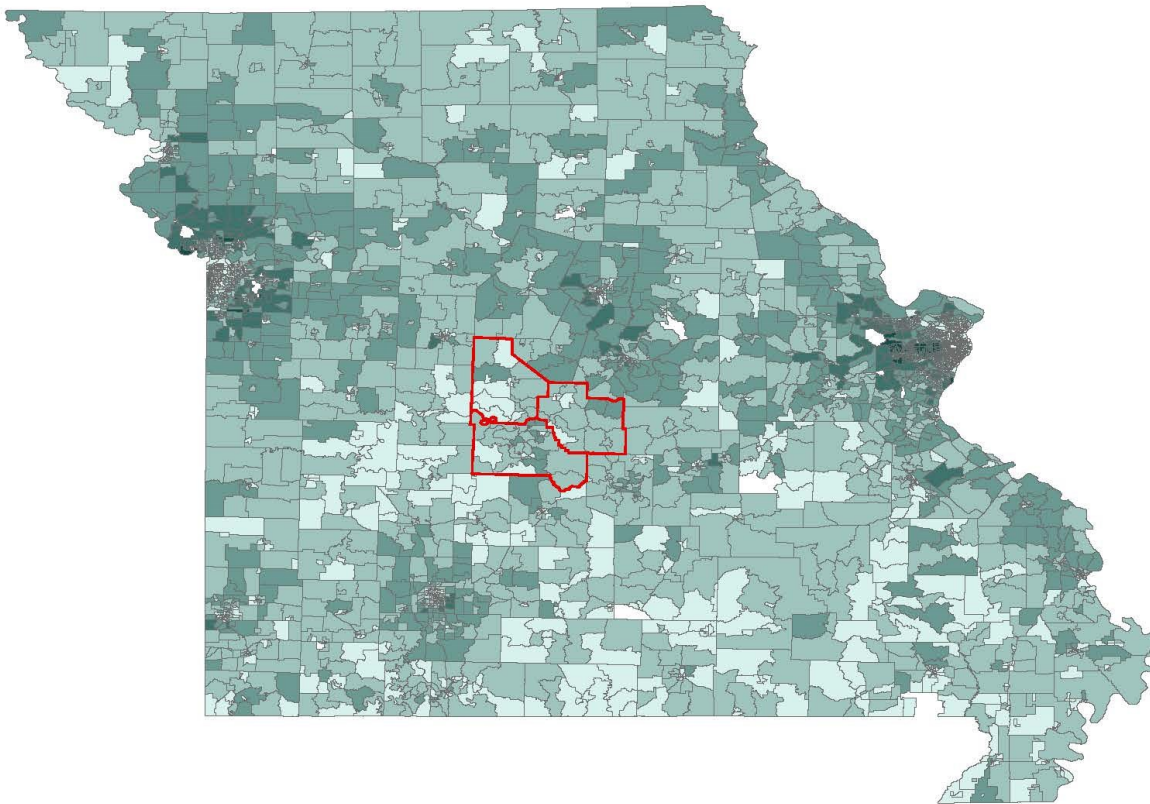
	Camden		Miller		Morgan	
	2000	2017	2000	2017	2000	2017
<b>Total Households</b>	15,740	16,340	9,288	9,514	7,847	7,774
<b>&lt; \$10,000</b>	1,313	1,252	1,046	649	912	1,051
<b>\$10,000-\$14,999</b>	1,216	915	948	726	797	634
<b>\$15,000-\$24,999</b>	2,471	1,516	1,648	1,399	1,446	1,034
<b>\$25,000-\$34,000</b>	2,657	1,977	1,623	1,016	1,376	1,194
<b>\$35,000-\$49,999</b>	3,077	2,413	1,752	1,868	1,368	933
<b>\$50,000-\$74,999</b>	2,777	3,387	1,451	1,754	1,194	1,459
<b>\$75,000-\$99,999</b>	1,185	2,096	480	873	363	672
<b>\$100,000 - \$149,999</b>	605	1,767	199	750	240	599
<b>\$150,000 - \$199,999</b>	197	416	88	212	77	153
<b>\$200,000&lt;</b>	242	601	53	267	74	45
<b>Median Household Income</b>	\$35,840	\$50,496	\$30,977	\$41,461	\$30,659	\$34,776
<b>Median Household Income (Inflation Adjusted 2016 Dollars)*</b>	\$52,420	\$65,171	\$45,307	\$57,662	\$44,842	\$49,146

Source: US Census, 2000 Census, 2017 ACS 5-Year Estimates

\*In order to accurately compare income over time, it is useful to adjust income from past time periods for inflation. Incomes and cost-of-living have increased from 2000 to 2014. The adjustment shows an income of \$35,840 in 2000 has similar buying power as an income \$49,271 in 2014. The adjustment was made using the BLS CPI calculator.

# State of Missouri

## Median Household Income



### Legend

- Camden
- Miller
- Morgan

### Household Income

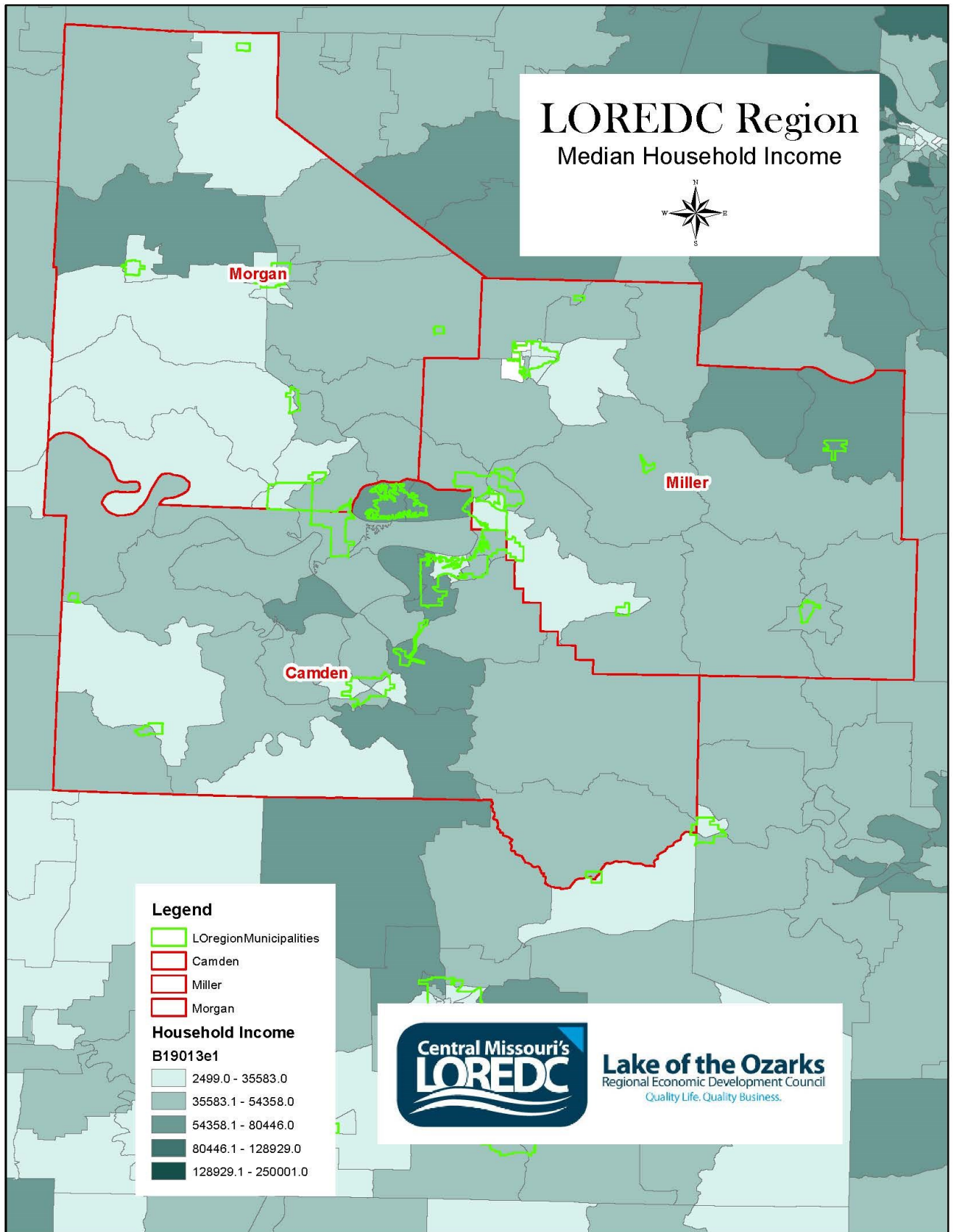
B19013e1

- 2499.0 - 35583.0
- 35583.1 - 54358.0
- 54358.1 - 80446.0
- 80446.1 - 128929.0
- 128929.1 - 250001.0



**Lake of the Ozarks**  
Regional Economic Development Council  
Quality Life. Quality Business.

U.S. Census Bureau, 2016 ACS 5-Year Estimates



U.S. Census Bureau, 2016 ACS 5-Year Estimates



## Employment Data

- County Populations by Industry
- County Populations by Occupation
- County Populations by Class of Worker
  - County Average Wages 2014
  - County Populations by Commute
- County Unemployment Statistics 2014-2015
  - State Unemployment Map
  - Regional Unemployment Map

[Return to Table of Contents](#)



**Lake of the Ozarks**  
Regional Economic Development Council  
*Quality Life. Quality Business.*



## County Populations by Industry (2000, 2017 ACS 5yr.)

Industry	Camden		Miller		Morgan	
	2000	2017	2000	2017	2000	2017
<b>Agriculture/Forestry/ Fishing/Hunting</b>	298	267	485	283	564	318
<b>Construction</b>	1,918	1,530	1,253	1,122	933	611
<b>Manufacturing</b>	1,634	1,075	1,441	1,090	1,438	1,070
<b>Wholesale Trade</b>	377	274	225	173	202	113
<b>Retail Trade</b>	2,780	2,902	1,297	2,013	1,041	1,335
<b>Transportation/ Warehousing/Utilities</b>	555	875	578	476	335	355
<b>Information</b>	314	124	162	175	124	75
<b>Finance/Insurance/ Real Estate</b>	1,073	954	581	638	390	326
<b>Management/ Administrative/ Waste Management</b>	928	1,314	474	567	348	450
<b>Educational/Health/ Social Services</b>	2,776	3,703	1,624	1,943	1,342	1,330
<b>Entertainment/ Recreation/Food</b>	2,145	2,460	1,274	1,245	589	387
<b>Other Services, except Pub- lic Administration</b>	677	1,011	601	519	413	395
<b>Public Administration</b>	864	647	931	824	483	356

Source: US Census 2000, 2017 ACS 5-Year Estimates



Photo By: Lake of the Ozarks CVB

## County Populations by Occupation

Occupation	Camden		Miller		Morgan	
	2000	2017	2000	2017	2000	2017
<b>Management/Professional</b>	4,848	4,988	2,533	2,834	1,888	1,697
<b>Service</b>	2,656	3,754	1,967	2,390	1,326	1,247
<b>Sales/Office</b>	4,787	4,621	2,578	2,832	1,990	2,015
<b>Construction/Extraction/Maintenance</b>	2,233	1,899	1,565	1,247	1,113	796
<b>Production/Transportation</b>	1,867	1,874	2,182	1,765	1,723	1,366

Source: US Census 2000, 2017 ACS 5-Year Estimates



Photo By: Lake of the Ozarks CVB

## County Populations by Class of Worker

Industry	Camden		Miller		Morgan	
	2000	2017	2000	2017	2000	2017
<b>Private Wage/Salary</b>	12,278	13,581	7,903	8,224	5,752	5,241
<b>Government</b>	2,298	1,990	1,771	1,897	1,125	969
<b>Self-Employed</b>	1,900	1,544	1,199	923	1,279	885
<b>Unpaid Family Workers</b>	85	21	53	24	46	26

Source: US Census 2000, 2017 ACS 5-Year Estimates

## County Average Wages 2017

	2017 Total Wages All Industries, Private Ownership		2017 Total Wages All Industries Public/Private	
	Avg. Annual Wages	Avg. Hourly Wages	Avg. Annual Wages	Avg. Hourly Wages
<b>Camden</b>	\$31,295	\$15.05	\$31,501	\$15.14
<b>Miller</b>	\$30,986	\$14.90	\$31,355	\$15.07
<b>Morgan</b>	\$28,515	\$13.71	\$28,494	\$13.70

Source: Missouri Economic Research and Information Center, 2017

## County Populations by Employment Status

	Camden		Miller		Morgan	
	2000	2017	2000	2017	2000	2017
<b>16 years &amp; older</b>	30,460	37,664	18,105	19,701	15,230	16,158
<b>In Labor Force</b>	17,158	18,652	11,565	11,929	8,622	7,702
<b>Employed</b>	16,339	17,136	10,926	11,068	8,202	7,121
<b>Unemployed</b>	790	1,481	618	843	414	560
<b>Not in Labor Force</b>	13,302	19,012	6,540	7,772	6,608	8,456

Source: US Census 2000, 2017 ACS 5-Year Estimates

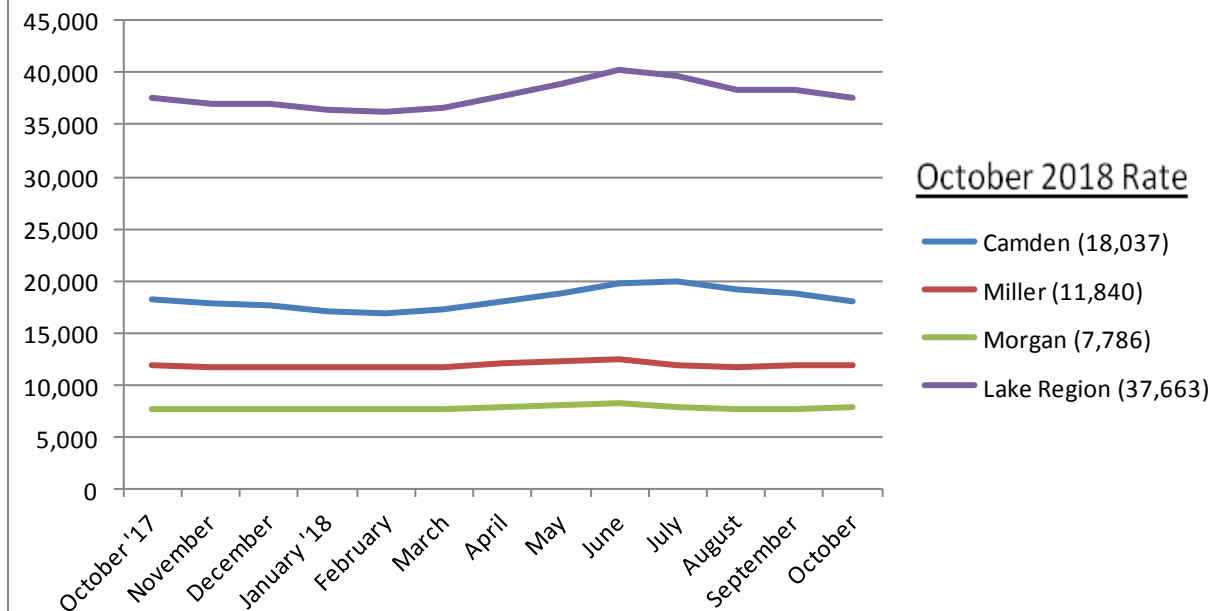
## County Populations by Commute

Mode of Transportation	Camden		Miller		Morgan	
	2000	2017	2000	2017	2000	2017
<b>Car, Truck, Van drove alone</b>	12,294	13,864	8,030	8,228	5,648	5,050
<b>Car, Truck, Van carpooled</b>	2,370	1,776	1,854	1,766	1,401	953
<b>Public Transport</b>	34	6	20	9	23	0
<b>Walked</b>	108	92	213	213	235	295
<b>Other Means</b>	242	237	100	203	80	341
<b>Worked at Home</b>	861	881	510	364	694	406

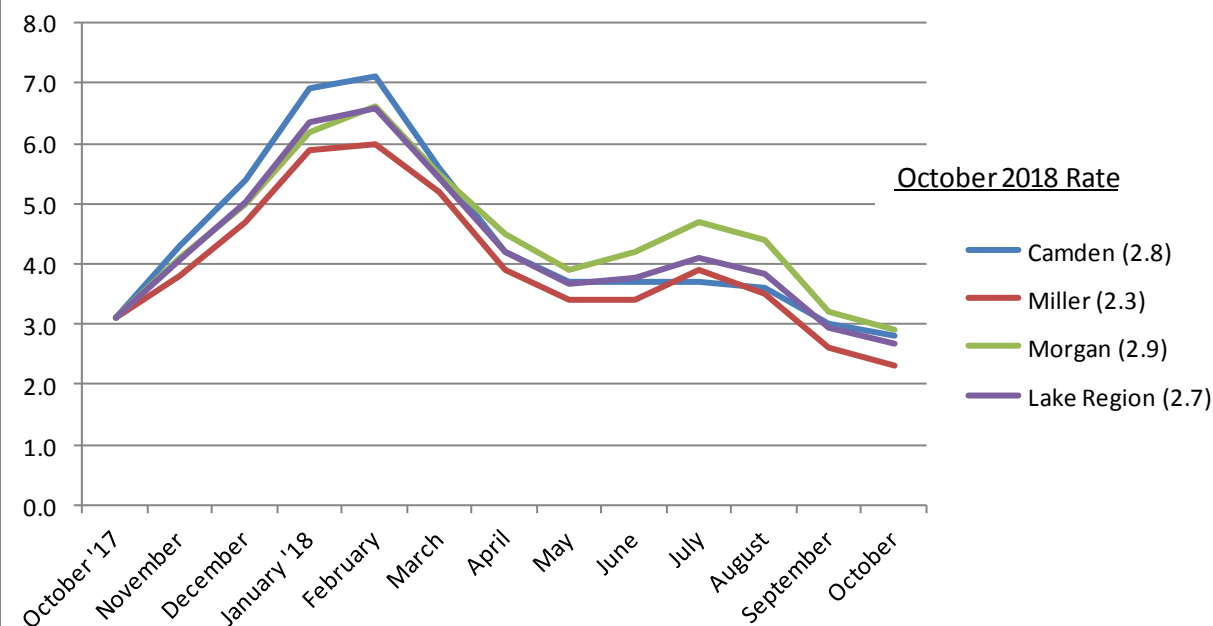
Source: US Census 2000, 2017 ACS 5-Year Estimates

# County Labor Statistics 2017-2018

## Lake of the Ozarks Labor Force October 2017 to October 2018

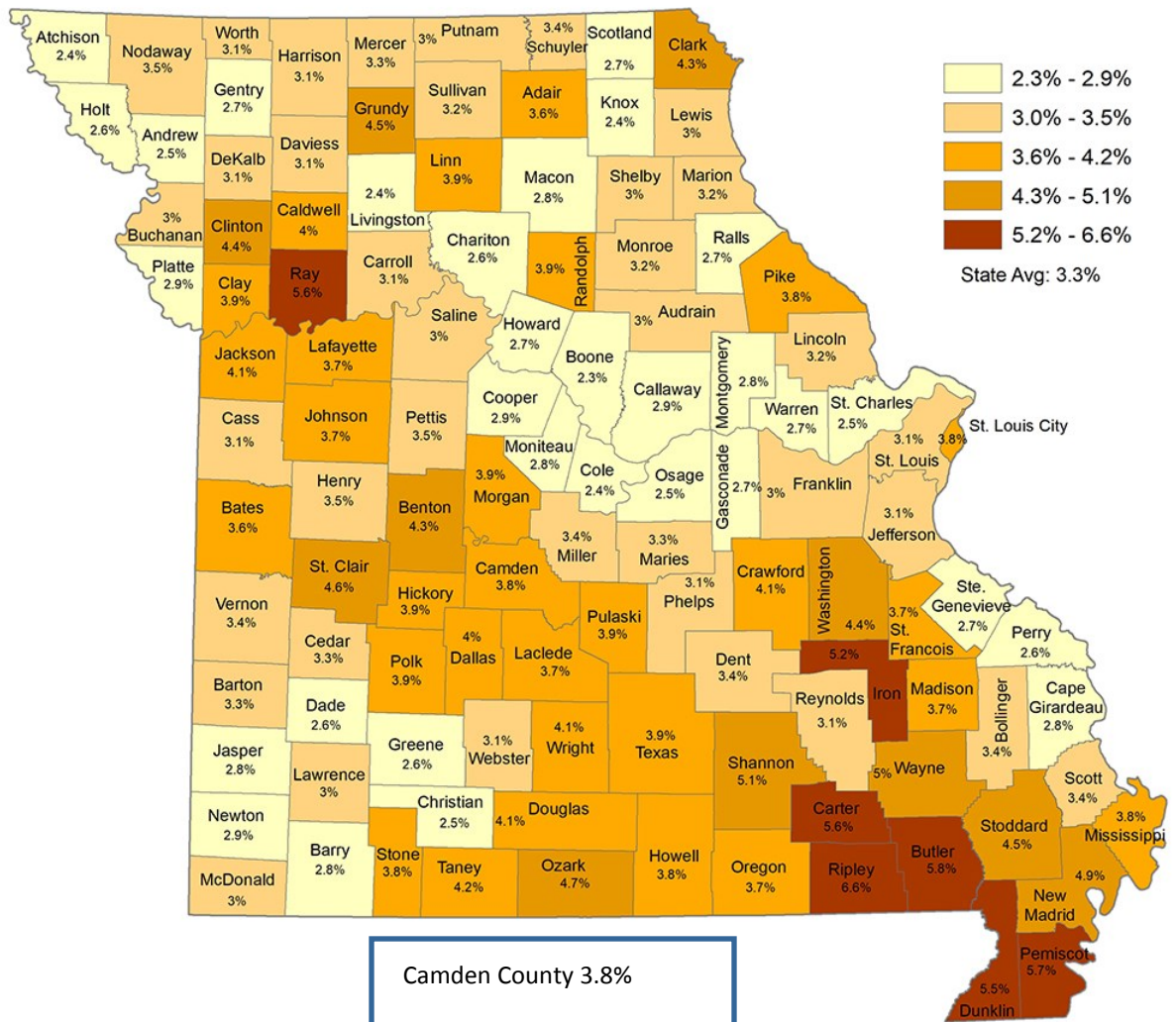


## Lake of the Ozarks Unemployment Rates October 2017 to October 2018

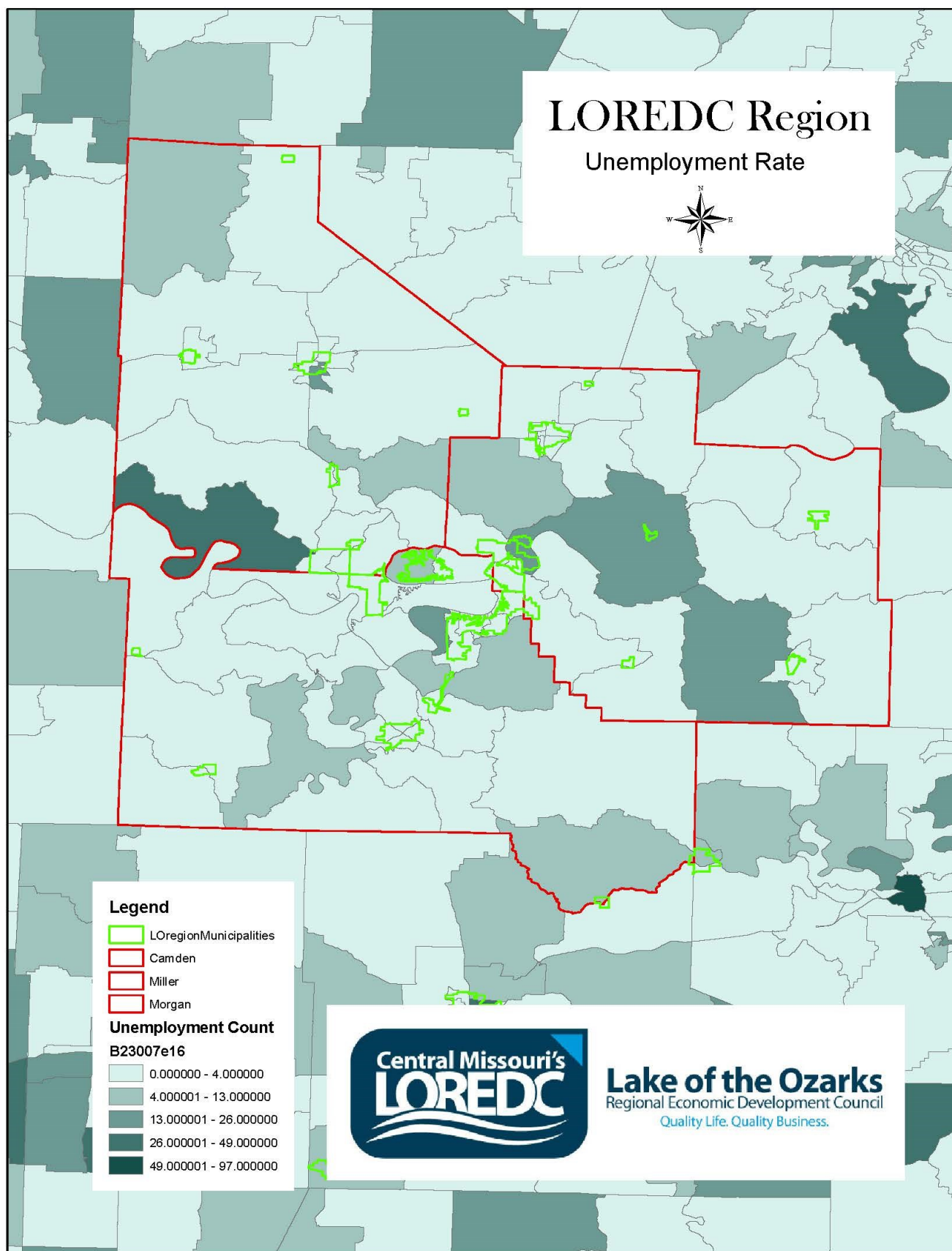




## Unemployment Rates - May 2018 Not Seasonally Adjusted



**Lake of the Ozarks**  
Regional Economic Development Council  
Quality Life. Quality Business.



U.S. Census Bureau, 2016 ACS 5-Year Estimates

## Tri-County Major Regional Employers (\* MO's Top 50 Employers 2016)

Employer	Product/Service	Location
Adient	Manufacturing	Miller
Ameren Missouri*	Utility	All Counties
American Home Care	Health Care	Camden
APAC-Missouri Inc	Infrastructure Services	Camden
Big Surf Waterpark	Recreational Services	Camden
Camden County	Government	Camden
Camden on the Lake	Resort/Hotel	Camden
Camdenton R-III School District	Education	Camden
Casey's General Store *	Retail/Services	All Counties
Central Bank	Financial Service	All Counties
Charter Communication *	Infrastructure Services	All Counties
Country Club Hotel & Spa	Resort/Hotel	Camden
Dierbergs Markets*	Retail	Camden
Dollar General *	Retail	All Counties
Eldon School District	Education	Miller
G-2-M Supermarkets	Retail	Morgan
Gates Rubber Company	Manufacturing	Morgan
Gerbes Market & Pharmacy	Retail	Camden
Good Shepherd Nursing	Health Care	Morgan
Home Depot *	Retail	Miller
Hy-Vee *	Retail	Camden
Iberia R-V District	Education	Miller
Innovative Procurement	Manufacturing	Miller
Kohls	Retail	Miller
Lake Regional Health System	Health Care	All Counties
Lowe's *	Retail	Miller
Malone Staffing	Employment	All Counties
Manpower Staffing	Employment	All Counties
Mc Donald's*	Restaurants	Miller
Menards	Retail	Miller
Miller County	Government	Miller



Source: Lake of the Ozarks Council of Local Governments and <http://www.missourieconomy.org/>



## Tri-County Major Regional Employers (\* MO's Top 50 Employers 2016)



Employer	Product/Service	Location
Miller County Nursing Home	Health Care	Miller
Morgan County	Government	Morgan
Morgan County School District	Education	Morgan
Old Kinderhook Golf & Lodge	Resort/Hotel	Camden
Opies, Inc.	Transportation	Miller
O'Reilly's Auto Parts	Retail	All Counties
Panera Bread Company *	Restaurants	Camden
Penmac Staffing *	Employment	All Counties
Premium Outlets	Retail	Camden
Re/Max Lake Of The Ozarks	Real Estate	Miller
Resort Of Port Arrowhead	Resort/Hotel	Miller
School of the Osage R-II	Education	Miller
Speedline Technologies	Manufacturing	Camden
Tan-Tar-A Resort	Resort/Hotel	Camden
Target *	Retail	Camden
The Lodge of Four Seasons	Resort/Hotel	Camden
Topsiders Boat Rental	Recreational Services	Camden
Unilever	Manufacturing	Miller
UPS *	Logistics	All Counties
Vitronics Soltec Inc	Manufacturing	Camden
Walgreens *	Retail	Miller
YMCA *	Recreational Services	Camden
Walmart *	Retail	All Counties



Photo By: Lake of the Ozarks CVB





Photo By: Lake of the Ozarks CVB

## Taxation Data

- State of Missouri Tax Rates
- Sales Tax Per County, April 2015
- County Classifications/Assessments 2015
  - County Personal Property Tax Rates
  - County Real Estate Tax Rates
  - Local Sales Tax Receipts
    - TIF District Map
  - Enterprise Zone Map

[Return to Table of Contents](#)



**Lake of the Ozarks**  
Regional Economic Development Council  
Quality Life. Quality Business.

## State of Missouri Tax Rates

Corporate Tax Rate: 6.25%

State Sales Tax Rates: 4.225%

Personal Income Tax Rate: 1.5 - 5.5% on income <\$9,000; 6% on income >\$9,000

### Sales Tax Per County, June 2018\*

Camden** 5.475%	Miller 5.225%	Morgan 5.725%
W/Ambulance District** 5.975%	W/Ambulance District 5.725%	W/Ambulance District 5.725%



Photo By: Camdenton Area Chamber of Commerce

### Sales Tax Per City, June 2018\*

Camden		Miller		Morgan	
Camdenton**	7.475%	Bagnell	6.225%	Barnett	5.725%
Lake Ozark	8.225%	Brumley	6.725%	Gravois Mills	7.225%
Laurie	7.975%	Eldon	8.125%	Laurie	7.725%
Linn Creek	8.725%	Iberia	7.725%	Rocky Mount	5.725%
Osage Beach**	7.475%	Lake Ozark**	7.975%	Stover	7.225%
Richland	8.475%	Osage Beach**	7.725%	Sunrise Beach	7.725%
Stoutland	6.475%	St. Elizabeth	6.725%	Syracuse	5.725%
Sunrise Beach**	7.975%	Tuscumbia	6.725%	Versailles	7.725%
Village of Four Seasons**	6.975%				

Source: <http://dor.mo.gov/pdf/localsales.pdf> , <https://dor.mo.gov/pdf/rates/2018/jun2018.pdf>

\*Includes State tax rate of 4.225%

\*\* Higher rates within various CIDs and TDDs



## County Classifications/Assessments 2017

	Camden	Miller	Morgan
County Seat	Camdenton 65020	Tuscumbia 65082	Versailles 65084
Classification	First Class	Third Class	Third Class
Assessed Valuation	\$1,672,515,421	\$409,184,604	\$517,478,049
Square Miles	709	600	614

## County Personal Property Tax Rates

	Camden	Miller	Morgan
Personal Property: % on \$100 Appraised Value	33 1/3	33 1/3	33 1/3
Farm Machinery: % on \$100 Appraised Value	12	12	12



Photo By: Camdenton Area Chamber of Commerce

## County Real Estate Tax Rates

	Camden	Miller	Morgan
Commercial: % of Appraised Value	32	32	32
Residential: % of Appraised Value	19	19	19
Agriculture: % of Appraised Value	12	12	12

Source: Missouri State Auditor, 2017 Property Tax Rates



# Local Sales Tax Receipts

(In dollars)

City	2018	2017	2016
Camdenton	84,162,139.85	169,536,740.44	168,144,744.34
Eldon	43,669,610.28	85,146,000.88	84,107,493.01
Lake Ozark	59,349,799.22	144,976,187.45	111,021,723.96
Osage Beach	232,989,359.44	488,084,663.55	487,671,264.71
Versailles	33,796,401.30	67,537,059.25	67,711,917.00

City	2015	2014	2013	2012
Camdenton	156,500,562.50	151,095,525	148,054,280	144,628,117
Eldon	78,358,969.76	85,900,121	86,120,466	82,931,772
Lake Ozark	104,424,317.71	137,122,062	95,879,469	86,792,893
Osage Beach	479,280,683.88	468,246,096	455,089,892	449,384,817
Versailles	63,279,369.31	62,449,024	60,376,116	58,629,524

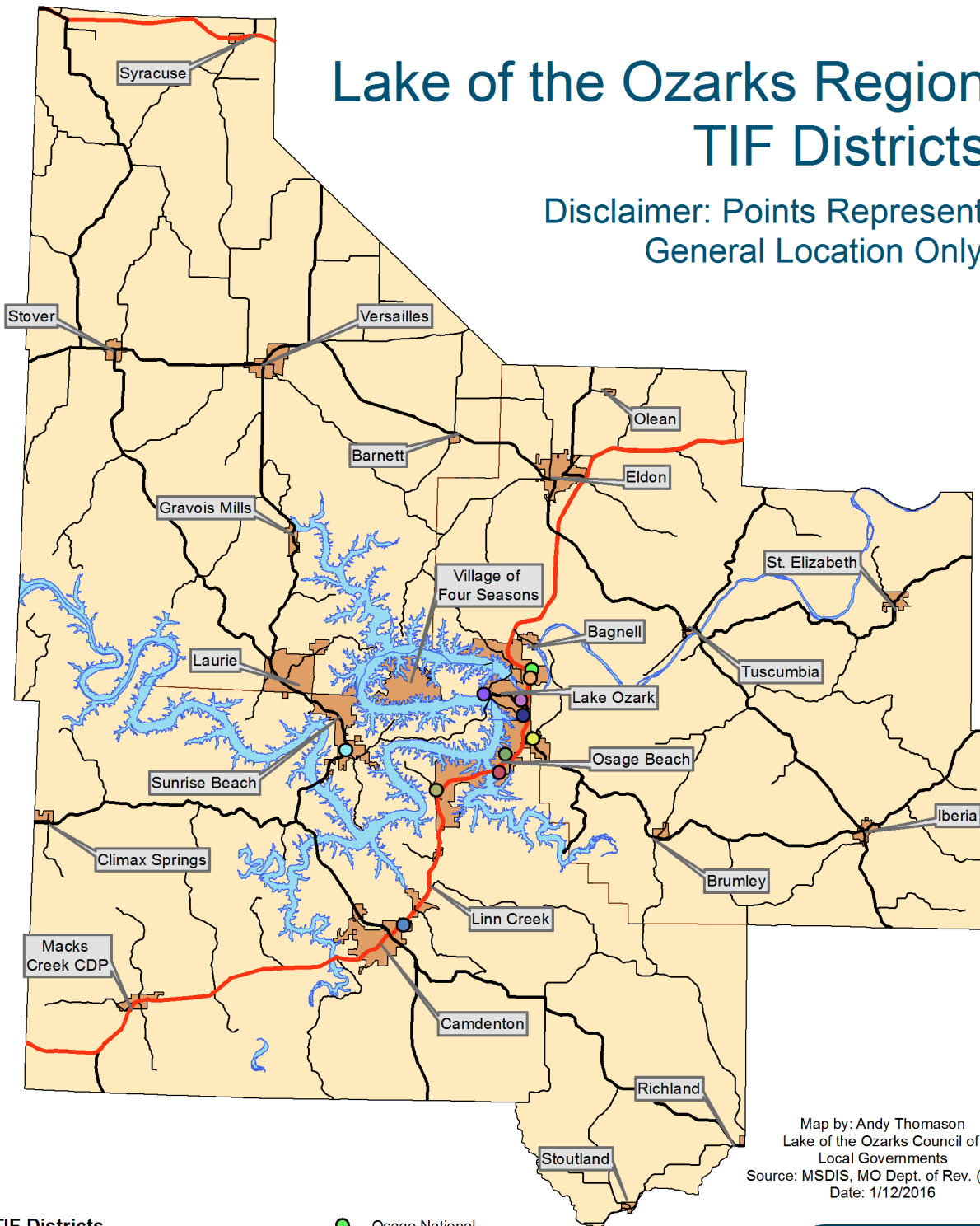
City	2011	2010	2009	2008
Camdenton	140,106,717	137,501,929	140,199,707	142,873,355
Eldon	85,383,318	83,866,052	82,603,191	87,128,709
Lake Ozark	54,600,931	52,134,700	51,847,572	57,751,337
Osage Beach	442,456,889	435,620,458	438,065,306	458,992,271
Versailles	55,126,629	55,090,741	55,536,898	59,164,387

Source: Missouri Department of Revenue Taxable Sales Report



# Lake of the Ozarks Region TIF Districts

Disclaimer: Points Represent  
General Location Only



## TIF Districts

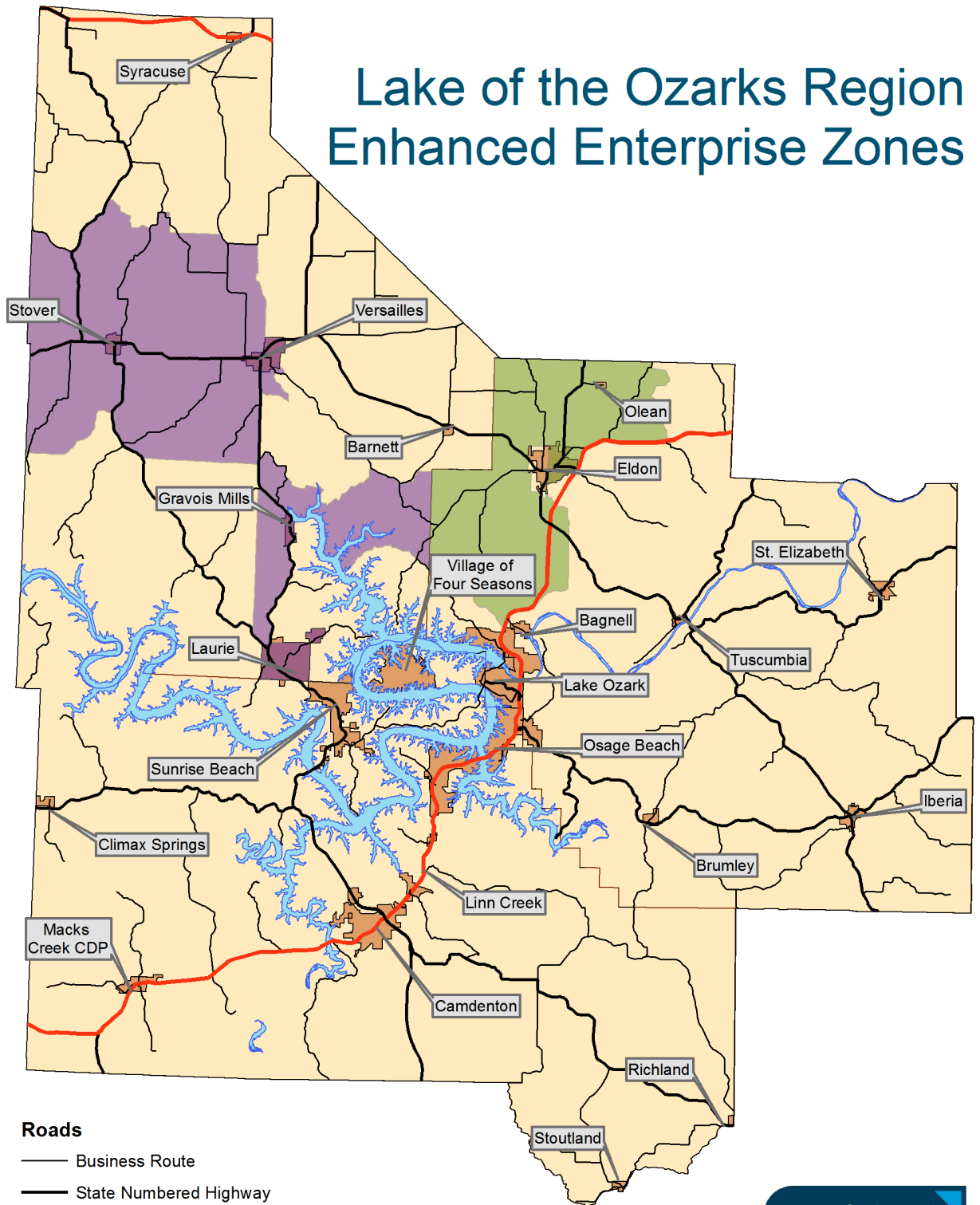
- |                                       |  |
|---------------------------------------|--|
| ● Arrowhead Centre                    | ● Osage National                           |
| ● Bierbergs Osage Beach Redevelopment | ● Osage National Retail                    |
| ● Horseshoe Bend                      | ● Prewitt's Highway 54 Enterprises         |
| ● Marina View Redevelopment           | ● Sunrise Beach Market Center              |
| ● Oak Ridge Landing                   | ● The Briscoe's                            |
|                                       | ● US Highway 54 and Business US Highway 54 |

Map by: Andy Thomason  
Lake of the Ozarks Council of  
Local Governments  
Source: MSDIS, MO Dept. of Rev. (2014)  
Date: 1/12/2016



**Lake of the Ozarks**  
Regional Economic Development Council  
Quality Life. Quality Business.

# Lake of the Ozarks Region Enhanced Enterprise Zones



## Roads

- Business Route
- State Numbered Highway
- State Lettered Highway
- US Highway

## Enhanced Enterprise Zones

- Miller County EEZ
- Morgan County EEZ

Map by: Andy Thomason  
Lake of the Ozarks Council of  
Local Governments  
Source: MSDIS  
Date: 5/12/2015



**Lake of the Ozarks**  
Regional Economic Development Council  
Quality Life. Quality Business.

## Transportation and Logistics Data

- County Major Roadways
- County Traffic Count 2015
- Traffic Volumes Map 2015
- Transportation - Major Airport
- County Area Transportation - Local/Regional Airports (within 100 miles)
  - Airport Locations Map
  - Active Rail Lines Map
  - Railroads/Railways
- Commercial Traffic Volume Map
- Missouri Transportation - Bus /Taxi Transportation
- County Area Transportation - Major Freight Carriers
- County Area Transportation - Local/Regional Freight Carriers

[Return to Table of Contents](#)



**Lake of the Ozarks**  
Regional Economic Development Council  
Quality Life. Quality Business.



## County Major Roadways

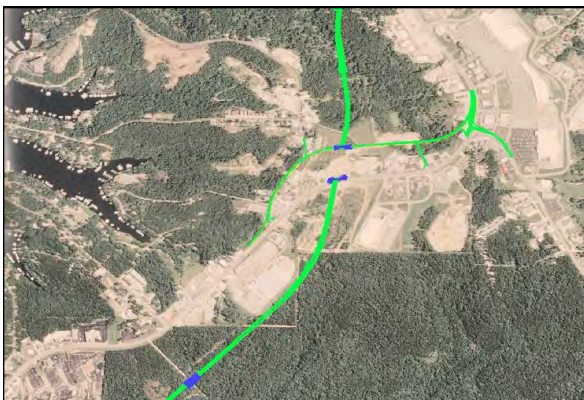
Camden	Miller	Morgan
US 54 Missouri 5 Missouri 7	US 54 Missouri 17 Missouri 42 Missouri 52 Missouri 87 Missouri 242	US 50 Missouri 5 Missouri 52 Missouri 135

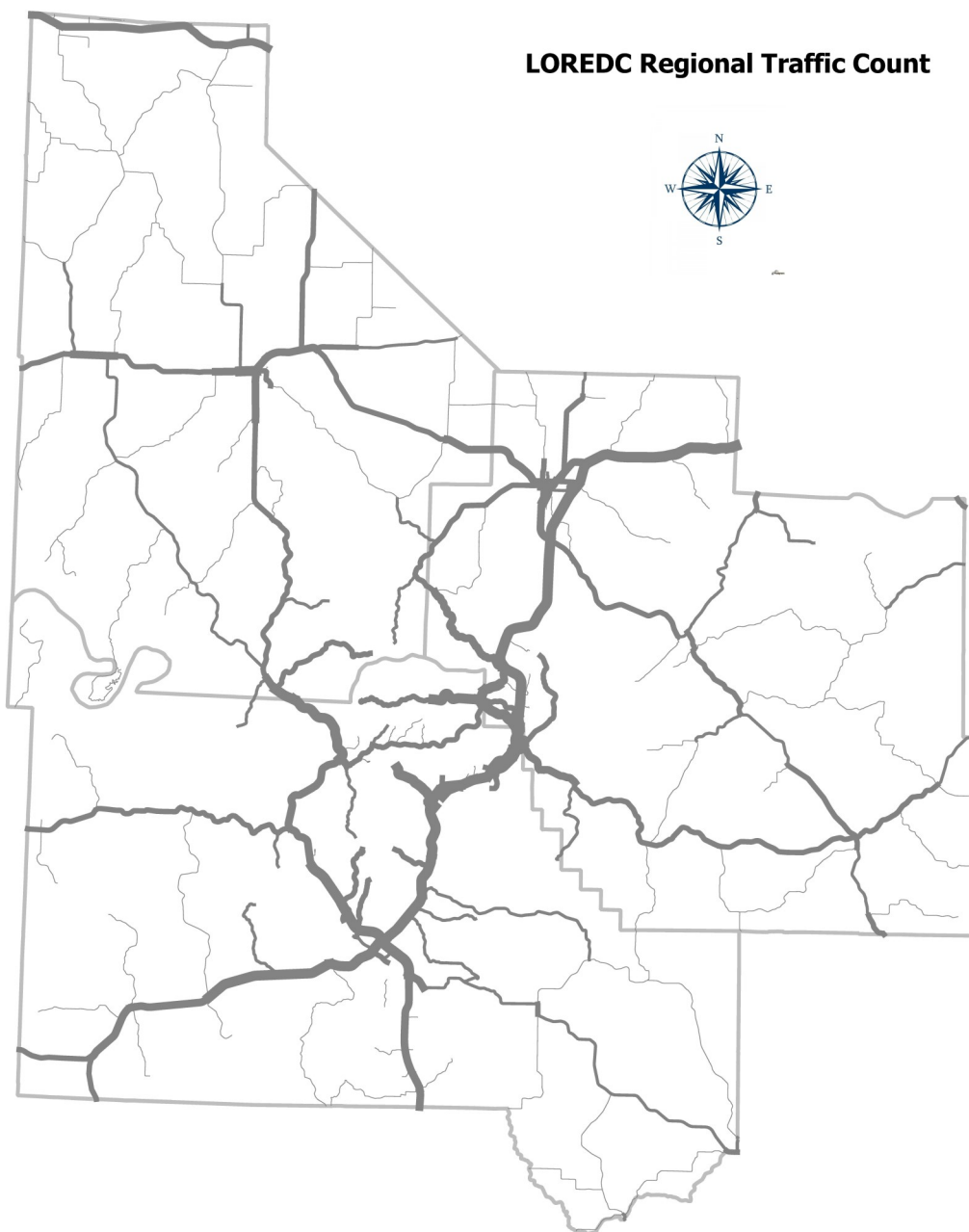
Source: <http://www.modot.org/newsandinfo/CountyMaps.htm>

## County Traffic Count 2017

County	Intersection/Location	Traffic Count
Camden	Hwy 54-Hwy 73	5,398
Camden	Hwy 54-Hwy 5	24,182
Camden	Hwy 5-Hwy 7	2,860
Camden	Hwy 5-Hwy 7s	6,220
Camden	Hwy 54-Hwy 42	19,680
Miller	Hwy 52-Hwy 17	1,266
Miller	Hwy 54b-Hwy 87	2,154
Miller	Hwy 17-Hwy 42	2,046
Morgan	Hwy 5-Hwy 135	9,078
Morgan	Hwy 5-Hwy 52	12,058
Morgan	Hwy 52-Hwy C	2,804
Morgan	Hwy 50-Hwy 5	5,953

Source: MoDOT





## Legend

LOREDC\_Missouri\_Traffic\_Count

— 13-500

— 501-1000

— 1001-2500

— 2501-5000

— 5001-17925

□ LOREDC\_Counties



**Lake of the Ozarks**  
Regional Economic Development Council  
*Quality Life. Quality Business.*

Source: MoDOT

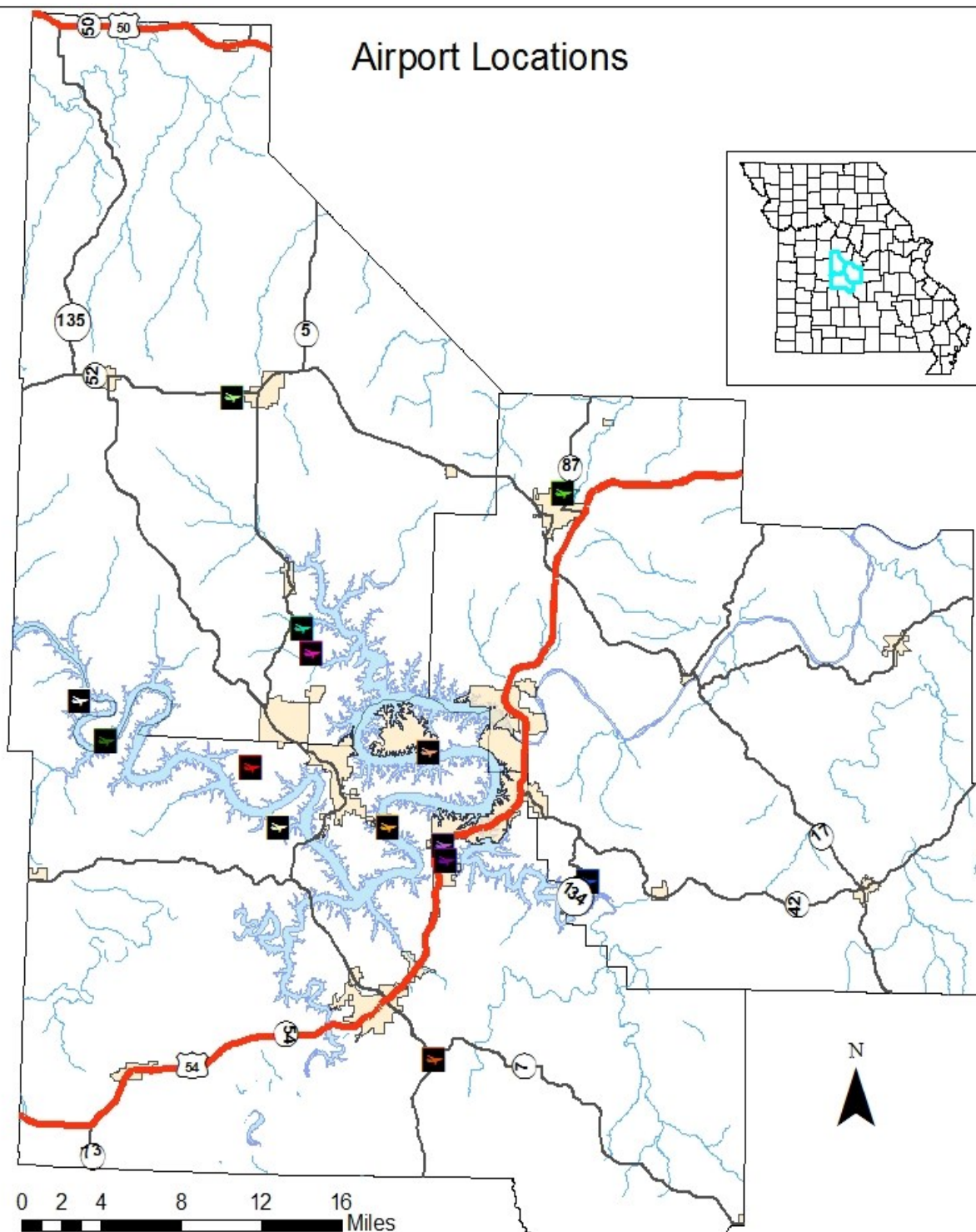
## Transportation - Major Airports

Columbia Regional Airport (COU) Columbia, MO 65201	Springfield-Branson National Airport (SGF) Springfield, MO 65802
Kansas City International Airport (MCI) Kansas City, MO 64153	Lambert-St. Louis International Airport (STL) St. Louis, MO 63145
Branson Airport (BKG) Hollister, MO 65672	Waynesville Regional Airport (TBN) Ft. Leonard Wood, MO 65473















## County Area Transportation - Local/Regional Airports (within 100 miles)

City/Location	Airport/Airline	Code
Bolivar	Bolivar Municipal	M17
Boonville	Jesse Viertel Memorial	VER
Buffalo	Buffalo Municipal	H17
Camdenton	Camdenton Memorial– Lake Regional	OZS
Eldon	Eldon Model Airpark	H79
Fulton	Elton Hensley Memorial	FTT
Jefferson City	Jefferson City Memorial	JEF
Kaiser/Lake Ozark	Lee C Fine Memorial	AIZ
Lebanon	Floyd W Jones	LBO
Linn	Linn State Technical College	1H3
Mansfield	Mansfield Municipal	O3B
Mexico	Mexico Municipal	MYJ
Osage Beach	Grand Glaize	K15
Osceola	Osceola Municipal	3MO
Richland	Richland Municipal	MO1
Rolla	Rolla Downtown	K07
Rolla/Vichy	Rolla National	VIH
Sedalia	Sedalia Memorial	DMO
Seymour	Owen Field	H58
Springfield	Springfield Downtown	3DW
Springfield	Flying Bar H	MO2
Stockton	Stockton Municipal	MO3
Versailles	Roy Otten Memorial	3VS
Warsaw	Warsaw Municipal	RAW
Waynesville	Waynesville St. Robert Regional	TBN

## Airport Locations



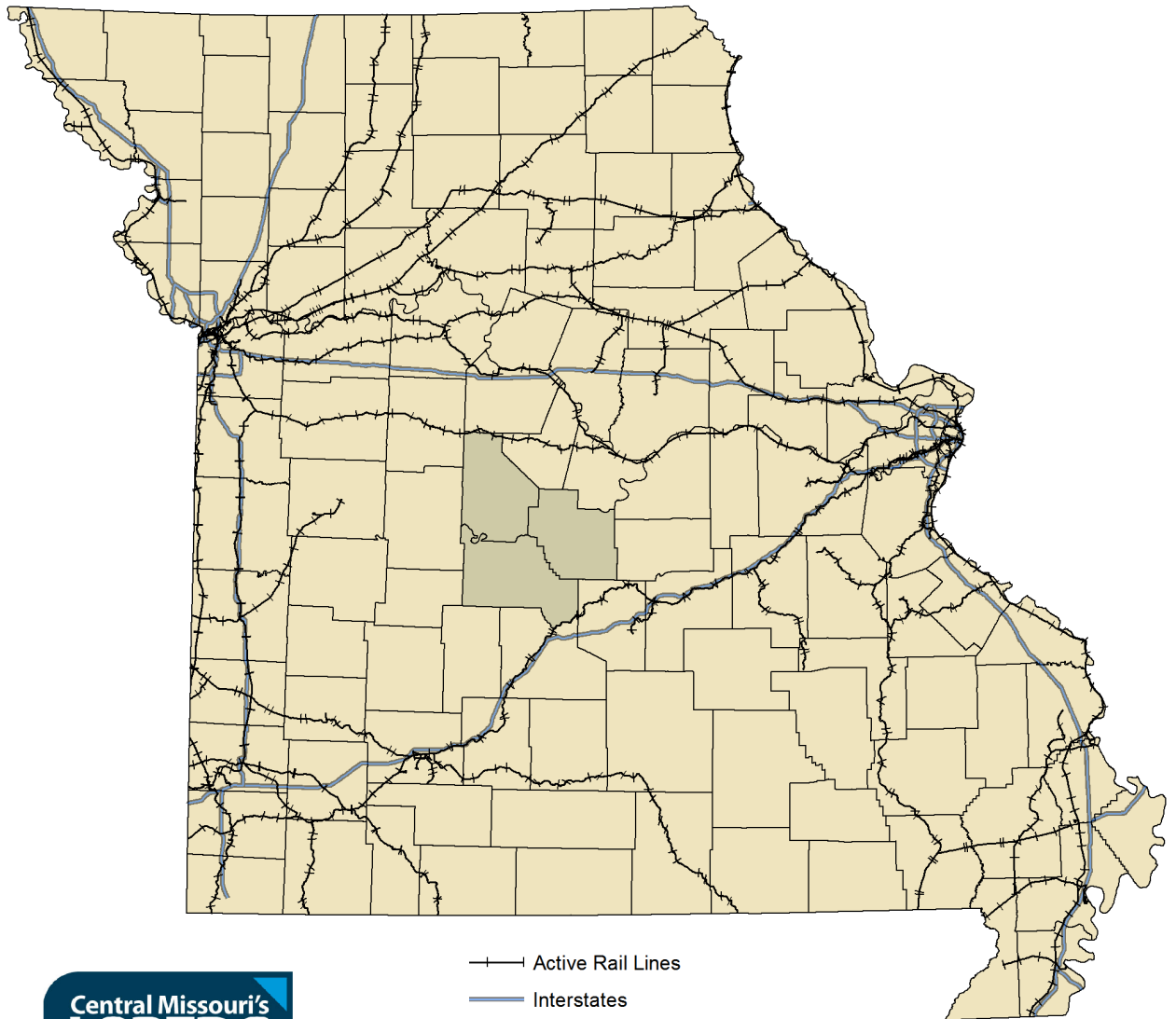
### Airports

 BAR-VIK	 ELDON MODEL AIRPARK	 LOGH
 CAMDENTON MEMORIAL	 GRAND GLAIZE- OSAGE BEACH	 MISTWOOD
 EAGLE'S LANDING	 HARBOUR	 ROY OTTEN MEMORIAL AIRFIELD
 EAGLE'S ROOST	 IVY BEND	 SHERLOCK FIELD
	 LEE C FINE MEMORIAL	 TAN TAR A RESORT

Created By: Andy Draper  
LOCLG  
Source: MISDIS



## State of Missouri, Active Rail Lines



**Lake of the Ozarks**  
Regional Economic Development Council  
Quality Life. Quality Business.

Map by: Andy Thomason  
Lake of the Ozarks Council of  
Local Governments  
Source: MSDIS, MoDOT  
Date: 1/12/2015

# Railroads/Railways

19 Railroads

State of Missouri

## Classifications

Class I	National Railroads
Regionals	Two/Three States
Terminals	Metropolitan Areas
Shortlines	Regional Inside State Lines
Tourists	Short Trip/Passengers
Amtrak	National Inter-City Passenger

Source: <http://www.modot.org/othertransportation/rail/FreightRailroads.htm>

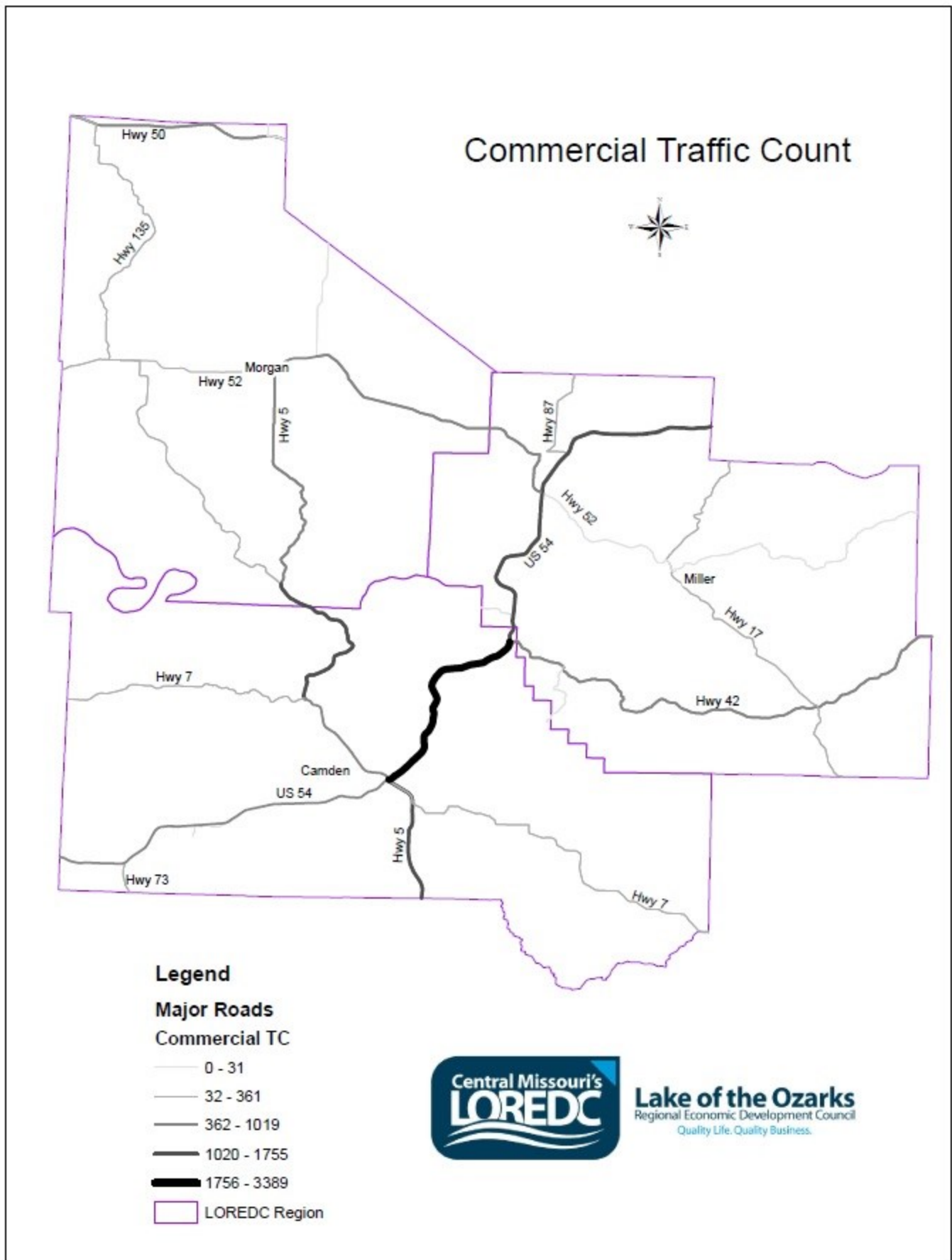
Code	Railroad/Railway
AM	Arkansas & Missouri Railroad
BNSF	Burlington Northern Santa Fe
CMR	Central Midland Railway
CP	Canadian Pacific
CT	Columbia Terminal
FTRL	Foster Townsend Rail Logistics
KAW	Kaw River Railroad
KCS	Kansas City Southern
KCT	Kansas City Terminal Railway
MNA	Missouri & Northern Arkansas Railroad
MNC	Missouri North Central Railroad
NS	Norfolk Southern Railway
OVR	Ozark Valley Railroad
PCPA	Pemiscot County Port Railroad
SE	SEMO Port Railroad, Inc.
SKOL	South Kansas & Oklahoma Railroad
TRRA	Terminal Railroad Association of St. Louis
UP	Union Pacific Railroad
WBRW	West Belt Railway



## Amtrak Terminals

Hermann, MO  
Independence, MO  
Jefferson City, MO  
Kansas City, MO  
Kirkwood, MO  
La Plata, MO  
Lee's Summit, MO  
Poplar Bluff, MO  
Sedalia, MO  
St. Louis, MO  
Warrensburg, MO  
Washington, MO

Transportation and Logistics Data



Source: MoDOT

## Missouri Transportation - Bus /Taxi Transportation

Busline/Taxi	Serving Counties
365 Cabs	Camden, Miller
Amy's Cab	Camden, Miller
ASAP Taxi	Camden, Miller
Buddy's Transportation Service	Camden, Miller, Morgan
Checker Cab	Camden, Miller, Morgan
City Cab Company	Camden, Miller
Elegant Transport	Camden, Miller, Morgan
F&S Designated Drivers Service	Camden, Miller, Morgan
Good Guyz Taxi	Camden
Gray Taxi and Courier Service	Camden, Miller, Morgan
Green Light Taxi Service LLC	Camden, Miller, Morgan
Maxi Taxi and Loto Transportation	Camden, Miller
OATS, Inc.	Camden, Miller, Morgan
Playin Hooky Water Taxi & Charter, LLC	Morgan
Post Cab Company	Camden, Miller
Rides in Sight	Camden, Miller, Morgan
Shuttle Me Charters	Camden, Miller, Morgan
Taxes, LLC	Camden
TNA Designated Driving Service	Camden, Miller, Morgan
Toofat Taxi Service LLC	Camden, Miller
vRIDE	Camden, Miller, Morgan



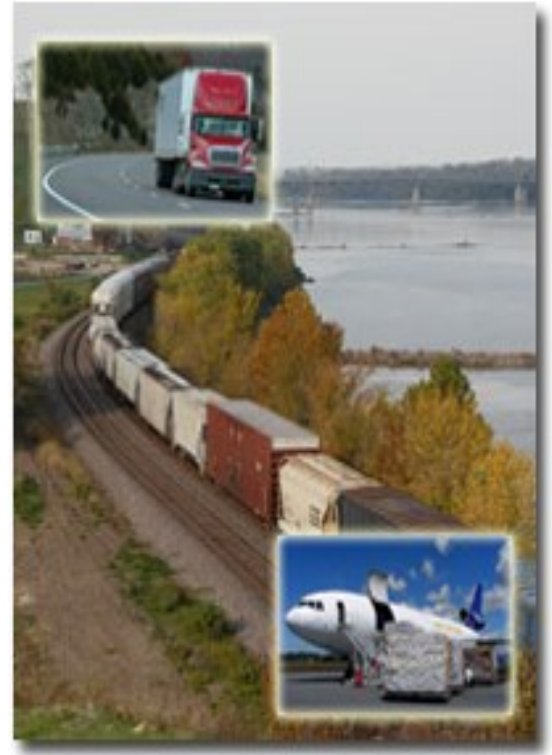


## County Area Transportation - Major Freight Carriers

Carrier	Location
UPS	Lake Ozark Camdenton
FedEx	Osage Beach
DHL	Serving Lake Area
Ryder System	Serving Lake Area
Penske	Serving Lake Area
JB Hunt	Serving Lake Area
Swift Transportation	Serving Lake Area
Landstar System	Serving Lake Area
Werner	Serving Lake Area
Pacer International	Serving Lake Area
US Xpress	Serving Lake Area
Old Dominion	Serving Lake Area
Saia	Serving Lake Area

## County Area Transportation - Local/Regional Freight Carriers

Carrier	Location
Eldon Freightways	Serving Lake Area
Sureway Transportation	Serving Lake Area
Online Freight	Serving Lake Area
Bisges Trucking	Serving Lake Area
Opies Trucking	Serving Lake Area
Elegant Transport	Serving Lake Area
Central Area Transportation	Serving Lake Area
Katschman Trucking	Serving Lake Area
ZP Trucking	Serving Lake Area
Posey Auto Transporters	Serving Lake Area
RoadRunner Auto Transport	Serving Lake Area
Suncoast Auto Transport	Serving Lake Area
AAA Anytime	Serving Lake Area
UHaul	Serving Lake Area



## Utilities and Telecommunications Data

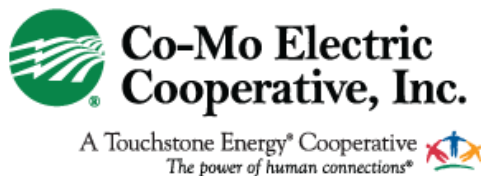
- County Population/Projections
- City Populations & Estimates
  - County Population by Age
- County Populations by Race & Ethnicity
  - County Housing
- County Populations by Employment Status
  - Population Density

[Return to Table of Contents](#)



**Lake of the Ozarks**  
Regional Economic Development Council  
*Quality Life. Quality Business.*

## County Area Utilities - Electric & Natural Gas



### County Area Electric

Company	Location
Ameren Missouri	Eldon Lake Ozark Linn Creek Osage Beach Versailles
Co-Mo Electric Cooperative	Gravois Mills Laurie Sunrise Beach
Gasconade Electric Co-Op	Iberia
Laclede Electric Co-Op	Camdenton
Three Rivers Electric Co-Op	Eldon
Southwest Electric Co-Op	Roach

### County Area Natural Gas

Company	Location
Ameren Natural Gas	Miller and Morgan Counties
Summit Natural Gas	Camden, Miller, Morgan Counties



## County Area Utilities - Public Water & Wastewater

### County Area Water

Company	Location
Public Water Supply Dist.2	Camdenton
Public Water Supply Dist 1	Macks Creek
Crocker Public Water Supply	Crocker
Public Water Supply	Camdenton
Ozark Shores Water	Lake Ozark
American Water Works	Eldon
Lake Region Water & Sewer	Sunrise Beach
Laclede Co. Water Dist	Stoutland

### Municipal Wastewater Systems

City	County	Design MGD
Barnett	Morgan	0.022
Camdenton	Camden	0.640
Eldon	Miller	1.000
Iberia	Miller	0.150
Lake Ozark/ Osage Beach	Miller, Cam- den	3.000
Laurie	Morgan	0.250
Linn Creek	Camden	0.046
St. Elizabeth	Miller	0.036
Stover	Morgan	0.073 0.120
Sunrise Beach	Camden	0.050
Versailles	Morgan	0.550



Photo: Osage Beach/Lake Ozark Joint Sewer Plant

### County Public Water Districts

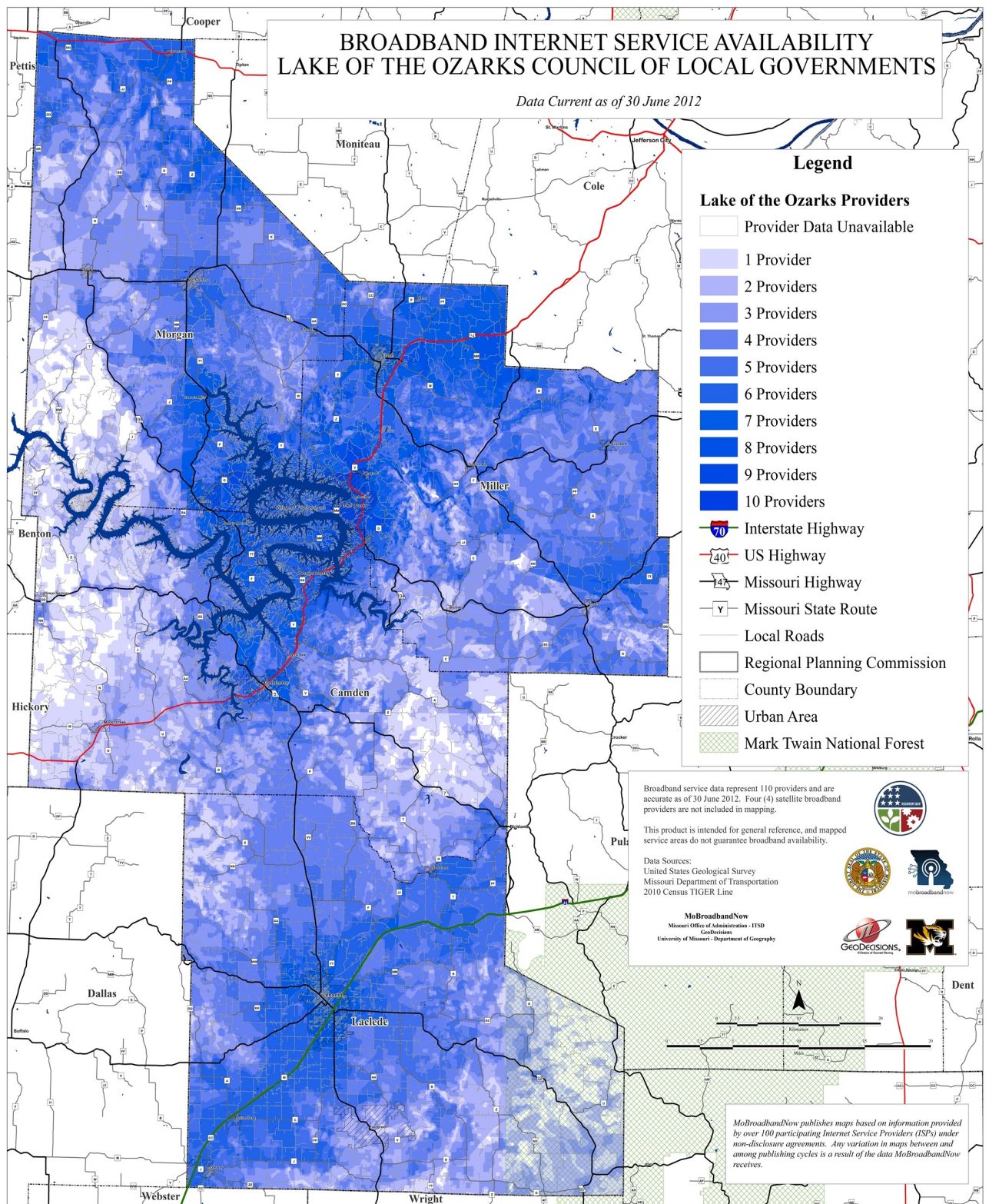
Camden County
Public Water District I
Public Water District II
Public Water District III
Public Water District IV
Public Water District V

### City Water Systems

City	County
Barnett	Morgan
Camdenton	Camden
Eldon	Miller
Iberia	Miller
Lake Ozark	Miller, Camden
Laurie	Morgan
Linn Creek	Camden
Osage Beach (East)	Camden
Osage Beach (West)	Camden
St. Elizabeth	Miller
Stover	Morgan
Sunrise Beach	Camden
Versailles	Morgan







## Broadband Service Provides

Service Providers	Provider DBA Name
AT&T Communications of Texas Inc.	AT&T Southwest
AT&T Mobility LLC	AT&T Mobility LLC
Cable America	Cable America Missouri LLC
Cellco Partnership	Verizon Wireless
CenturyTel Inc.	Century Link
Charter Communications	Charter Communications
Co-Mo Comm Inc.	Co-Mo Connect
Deutsche Telekom AG	T-Mobile
Fidelity Communications Company	Fidelity Cablevision Inc.
Hughes Communications Inc.	Hughes Network Systems LLC
Imagination Inc.	Iland Internet Services LLC
Otelco Inc.	Otelco Mid-Missouri LLC
Radio Wire Inc.	Radio Wire Inc.
Skycasters	Skycasters
Sprint Nextel Corporation	Sprint
StarBand Communications Inc.	StarBand Communications Inc.
The Stoutland Telephone Company	TDS Telecom
Total Highspeed Internet Service	Total Highspeed Internet Service
United States Cellular Corporation	U.S. Cellular
Via Sat Inc.	Wild Blue Communications Inc.
Video Direct Satellite & Entertainment	Video Direct
Windstream Corporation	Windstream Corporation
Wireless Investments LLC	Easy Net
YHTI Inc.	YHTI

Source: <http://www.locig.org/reportsstudies.htm>



Source: [www.ntca.org](http://www.ntca.org)

## County Media - Newspaper/Magazine Publications/Online

Publication/Web	Media Type	Location
Lake Sun	Publication	Eldon, Osage Beach
Lake Today	Publication	Lake Ozark
LO Profile	Publication	Lake Ozark
Focus	Publication	Camdenton, Eldon, Osage Beach
Lake Lifestyles	Publication	Camdenton, Eldon, Osage Beach
Lake of the Ozarks Official Vacation & Service Guide	Publication/Web	Camdenton, Eldon, Lake Ozark, Osage Beach
Lake of the Ozarks Restaurant Guide	Publication/Web	Camdenton, Eldon, Lake Ozark, Osage Beach
Vacation News	Publication/Web	Camdenton, Eldon, Osage Beach
Lake Media	Publication/Web	Camdenton, Eldon
Reporter	Publication	Camdenton
Weekly Standard	Publication	Camdenton, Eldon, Osage Beach
Ozark Freebee	Publication	Camdenton
TheLakeOnline	Web	Camdenton
Lakenewsonline	Web	Eldon
Westside Star	Publication	Camdenton, Eldon, Osage Beach
Lake of the Ozarks Real Estate	Publication/Web	Camdenton
Tube Tab	Publication	Camdenton, Eldon, Osage Beach
Boats	Publication	Camdenton, Eldon, Osage Beach
Advertiser	Publication	Eldon
Pennysaver	Publication	Camdenton, Eldon, Osage Beach
Shophelake	Web	Osage Beach



## County Communications Television Stations

Station	Location
KYTV (Channel 3) NBC	Springfield
KMOS (Channel 6) PBS	Sedalia
KOMU (Channel 8) NBC	Columbia
KOLR (Channel 10) CBS	Springfield
KRCG (Channel 13) CBS	Jefferson City
KMIZ (Channel 17) ABC	Columbia
KOZK (Channel 21) PBS	Springfield
KOZL (Channel 27) FOX	Springfield
Video Productions (Channel 32) IND	Osage Beach
KRBK (Channel 49) FOX	Osage Beach
Lake TV 32	Osage Beach
Charter Communications	Osage Beach

Source: <https://nocable.org/>



Photo By: Lake of the Ozarks CVB



Photo By: Lake of the Ozarks CVB



## County Communications Radio Stations

Station	Broadcast Mode	Format	Location
KBNN	750 AM	Business/News	Lebanon
KRMS	1150 AM	News/Talk	Osage Beach
KLIK (Bott)	1240 AM	News/Talk	Jefferson City
KCRL (Bott)	90.3 FM	Christian News/Info.	Gravois Mills
KCVO	91.7 FM	Christian Contemporary	Camdenton
KLOZ	92.7 FM	Adult Contemporary	Eldon
KRMS	93.5 FM	Rock	Osage Beach
KTKS	95.1 FM	Country	Versailles
KCMQ	96.7 FM	Rock	Columbia
KJMO	97.5 FM	Oldies	Jefferson City
KCLR	99.3 FM	Country	Columbia
KZWV	101.9 FM	Adult Contemporary	Eldon
KQUL	102.7 FM	Classic Hits	Lake Ozark
KJEL	103.7 FM	Country	Lebanon
KTXV	106.9 FM	Top 40	Columbia
KCLQ	107.9 FM	Country	Lebanon
Zimmer Broadcast			Columbia
Bene Broadcast			Osage Beach



Photo By: Lake of the Ozarks CVB

## Lake Area Information

- Area Chambers of Commerce
- Legislative Representatives – Federal
- Legislative Representatives – State

[Return to Table of Contents](#)



**Lake of the Ozarks**  
Regional Economic Development Council  
*Quality Life. Quality Business.*



**Eldon Area Chamber of Commerce**  
 403 East North Street  
 Eldon, MO 65020  
 573-392-3752  
[www.eldonchamber.com](http://www.eldonchamber.com)



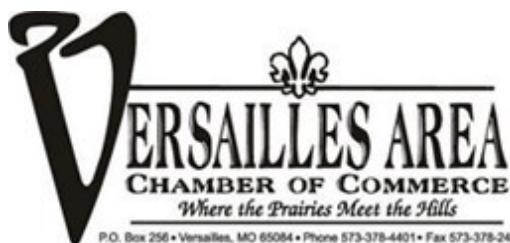
**Camdenton Area Chamber of Commerce**  
 739 U.S. Highway 54  
 Camdenton, MO 65020  
 573-346-2227  
[www.camdentonchamber.com](http://www.camdentonchamber.com)



**Lake Area Chamber of Commerce**  
 1 Willmore Lane  
 Lake Ozark, MO 65049  
 573-964-1008  
[www.lakeareachamber.com](http://www.lakeareachamber.com)



**Lake West Chamber of Commerce**  
 125 Oddo Drive  
 Sunrise Beach, MO 65079  
 573-374-5500  
[www.lakewestchamber.com](http://www.lakewestchamber.com)



**Versailles Area Chamber of Commerce**  
 109 N. Monroe  
 Versailles, MO 65084  
 573-378-4401  
[www.versailleschamber.com](http://www.versailleschamber.com)

## Legislative Representatives – Federal



### **Roy Blunt-Senator**

2740 East Sunshine Street, Suite B  
Springfield, MO 65804  
417-877-7814

[www.blunt.senate.gov](http://www.blunt.senate.gov)



### **Josh Hawley-Senator**

Dirksen Senate Office Building, B40A  
Washington, D.C. 20510  
202-224-6154

[www.hawley.senate.gov](http://www.hawley.senate.gov)



### **Blaine Luetkemeyer-Congressman**

3809 S. Providence Road, Suite A  
Columbia, MO 65203  
573-443-1041

[www.luetkemeyer.house.gov](http://www.luetkemeyer.house.gov)



### **Vicky Hartzler-Congresswoman**

2409 Hyde Park  
Jefferson City, MO 65109  
573-634-4884

[www.hartzler.house.gov](http://www.hartzler.house.gov)





## Legislative Representatives – State



**Mike Bernskoetter-Senator  
Miller & Morgan Counties**  
MO Senate  
201 West Capitol Avenue, Room 417  
Jefferson City, MO 65101  
573-751-2076  
<https://www.senate.mo.gov/mem06/>



**Justin Brown-Senator  
Camden County**  
MO Senate  
201 West Capitol Avenue, Room 420  
Jefferson City, MO 65101  
573-751-5713  
<https://www.senate.mo.gov/mem16/>



**Suzie Pollock—Representative  
Camden County**  
MO House of Representatives  
201 West Capitol Avenue  
Jefferson City, MO 65101  
573-751-1119  
<https://house.mo.gov/MemberDetails.aspx?year=2019&code=R&district=123>



**Rudy Veit—Representative  
Miller County**  
MO House of Representatives  
201 West Capitol Avenue  
Jefferson City, MO 65101  
573-751-0665  
<https://house.mo.gov/MemberDetails.aspx?year=2019&code=R&district=059>



**Tom Hurst-Representative  
Miller County**  
MO House of Representatives  
201 West Capitol Avenue  
Jefferson City, MO 65101  
573-751-1344  
<https://house.mo.gov/MemberDetails.aspx?year=2019&code=R&district=062>



**Rocky Miller-Representative  
Camden/Miller Counties**  
MO House of Representatives  
201 West Capitol Avenue, Room 233-B  
Jefferson City, MO 65101  
573-751-3604  
<https://house.mo.gov/MemberDetails.aspx?year=2019&code=R&district=124>



**David Wood-Representative  
Miller/Morgan Counties**  
MO House of Representatives  
201 West Capitol Avenue, Room 235  
Jefferson City, MO 65101  
573-751-2077  
<https://house.mo.gov/MemberDetails.aspx?year=2019&code=R&district=058>



Photo By: Lake of the Ozarks CVB



**January 2019**

Prepared By:  
Lake of the Ozarks Council of Local Governments  
P.O. Box 3553  
985 E Hwy 54  
Camdenton, MO 65020  
[www.loclg.org](http://www.loclg.org)  
Phone: 573-346-5692 Fax: 573-346-9686